

ScreenBeam Configurator for Windows 10

User Manual

V1.0

Table of Contents

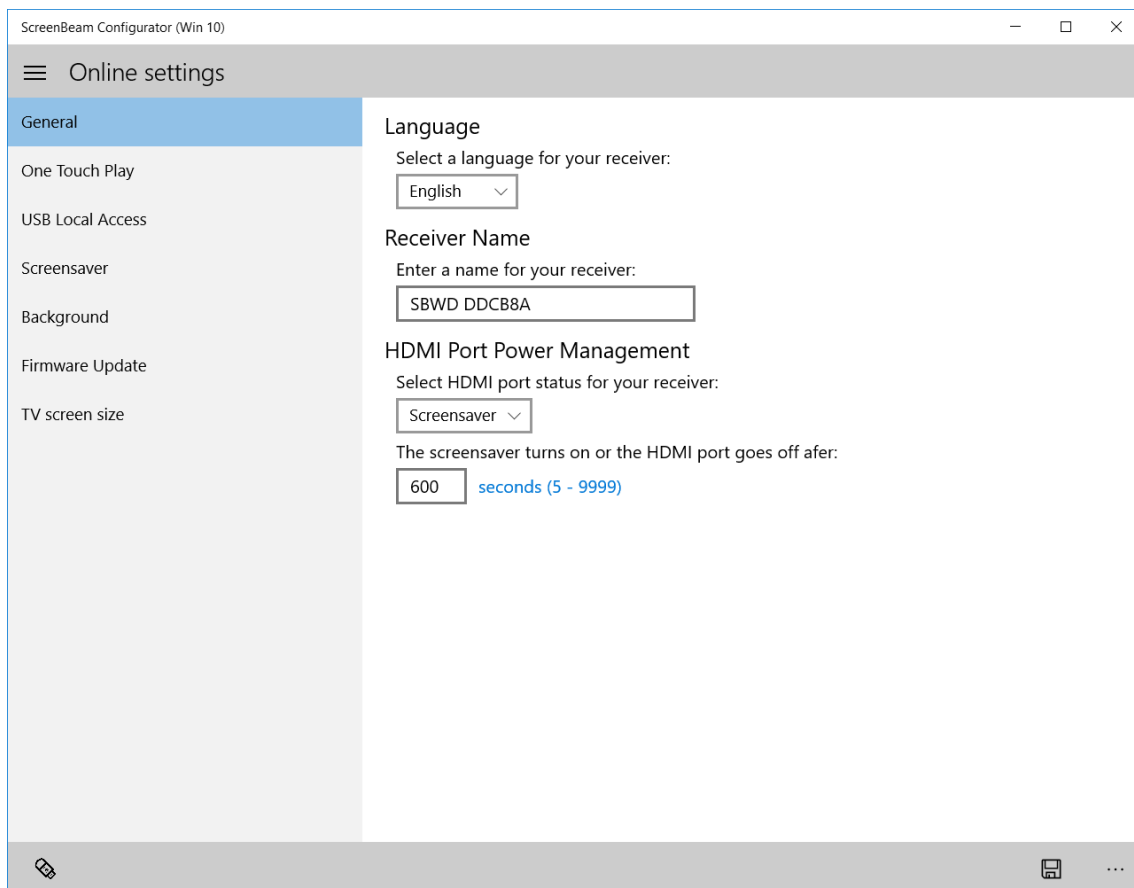
Part I.	Introduction	1
Part II.	Installing ScreenBeam Configurator.....	2
2.1.	Installing ScreenBeam Configurator on Microsoft Store.....	2
Part III.	Configuring ScreenBeam Receivers.....	6
3.1.	Configuring Receiver Wirelessly.....	6
3.1.1.	Selecting a Language	7
3.1.2.	Renaming the Receiver.....	9
3.1.3.	Managing the HDMI Port Output	11
3.1.4.	Setting up One Touch Play (HDMI-CEC)	12
3.1.5.	Setting up USB Local Access	14
3.1.6.	Setting up Screensaver	15
3.1.7.	Setting up Background.....	18
3.1.8.	Adjusting the TV Screen Size.....	21
3.2.	Configuring Receiver by USB	22
Part IV.	Updating Firmware for ScreenBeam Receivers.....	24
4.1.	Updating Firmware Wirelessly	24
4.2.	Updating Firmware by USB	28

Part I. Introduction

ScreenBeam Configurator (Win 10) is a fully featured utility for managing your ScreenBeam Receivers. This app gives you full control over your Receiver configuration and is designed to work universally with all your Windows 10 devices, including phones, tablets, and laptops. With ScreenBeam Configurator, you can update your firmware, rename your Receiver, optimize the screen size (overscan), and more.

Key features include:

- New firmware detection
- Wireless firmware updates
- Display language options
- Receiver naming options
- HDMI port output management
- Screensaver settings
- One-touch play (HDMI-CEC)
- USB access (UIBC/UoIP) management



Part II. Installing ScreenBeam Configurator

Actiontec's ScreenBeam Configurator (Win 10) allows configuring and upgrading ScreenBeam Receivers wirelessly or by using a USB flash drive. It is available from the **Microsoft Store**.

2.1. Installing ScreenBeam Configurator on Microsoft Store

● System Requirements

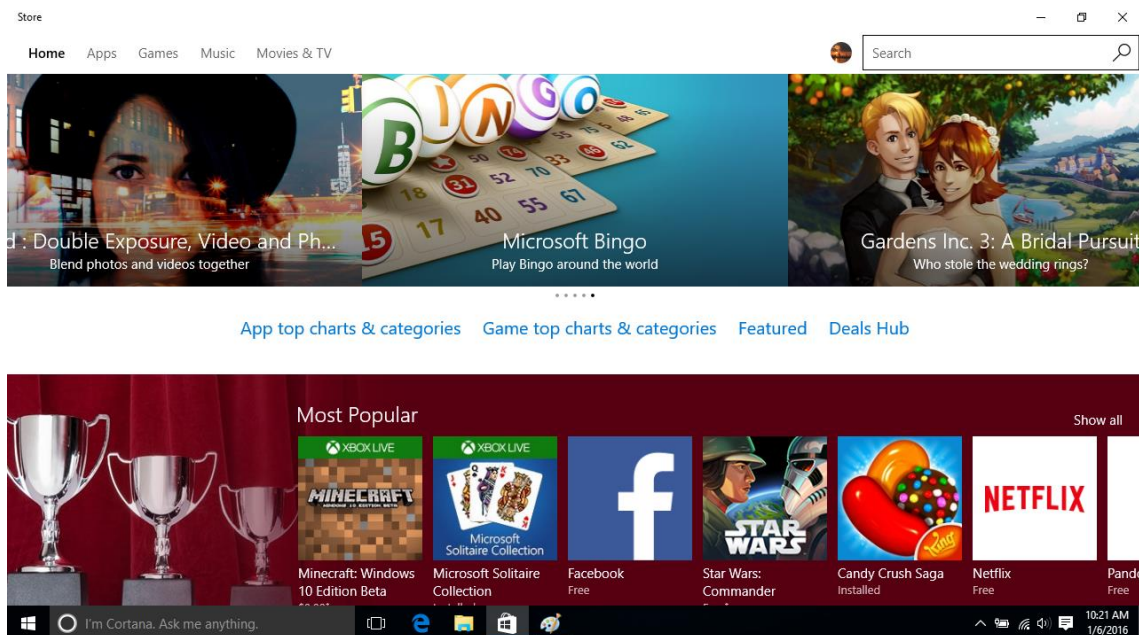
Recommended system requirements for installing the ScreenBeam Configurator are listed below:

- Windows 10
- Miracast capability
- Microsoft Store app pre-installed
- Internet connectivity

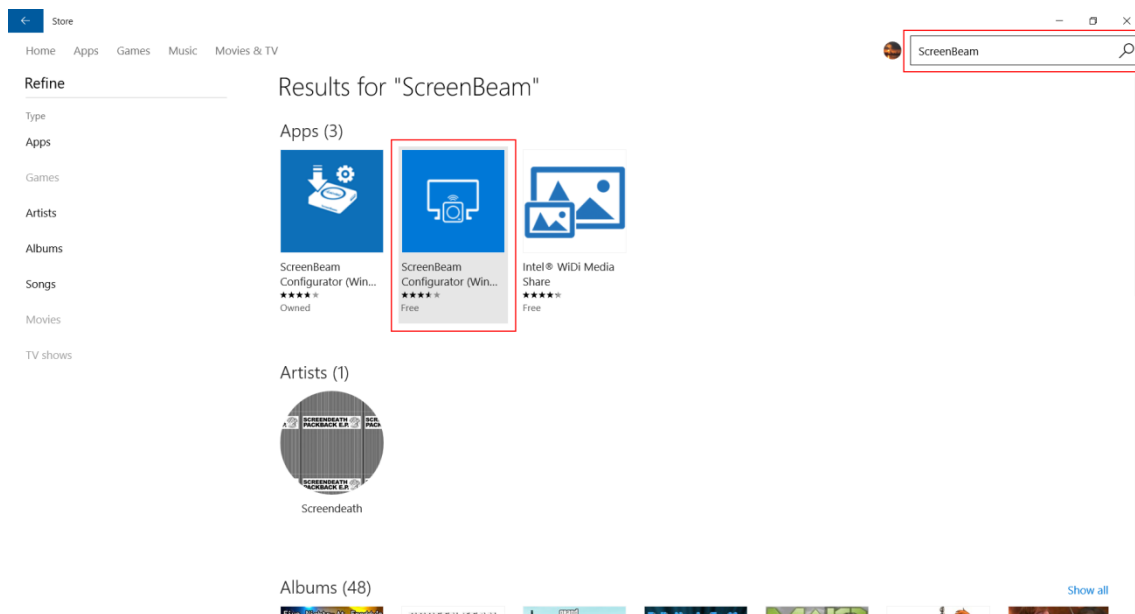
● Installing ScreenBeam Configurator

The ScreenBeam Configurator is available on Microsoft **Store** for free. Follow the procedure below to install the ScreenBeam Configurator:

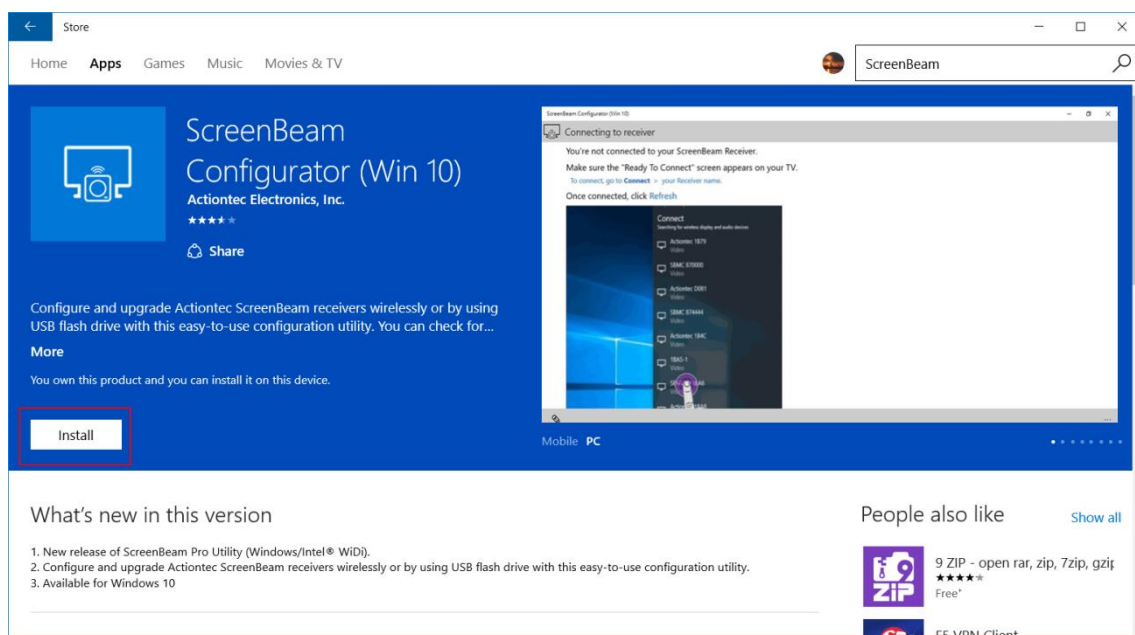
1. Launch **Microsoft Store** on your device.



2. Type **ScreenBeam** in the search box and tap/click the search icon. The **ScreenBeam Configurator** app will be found and displayed in the search results.

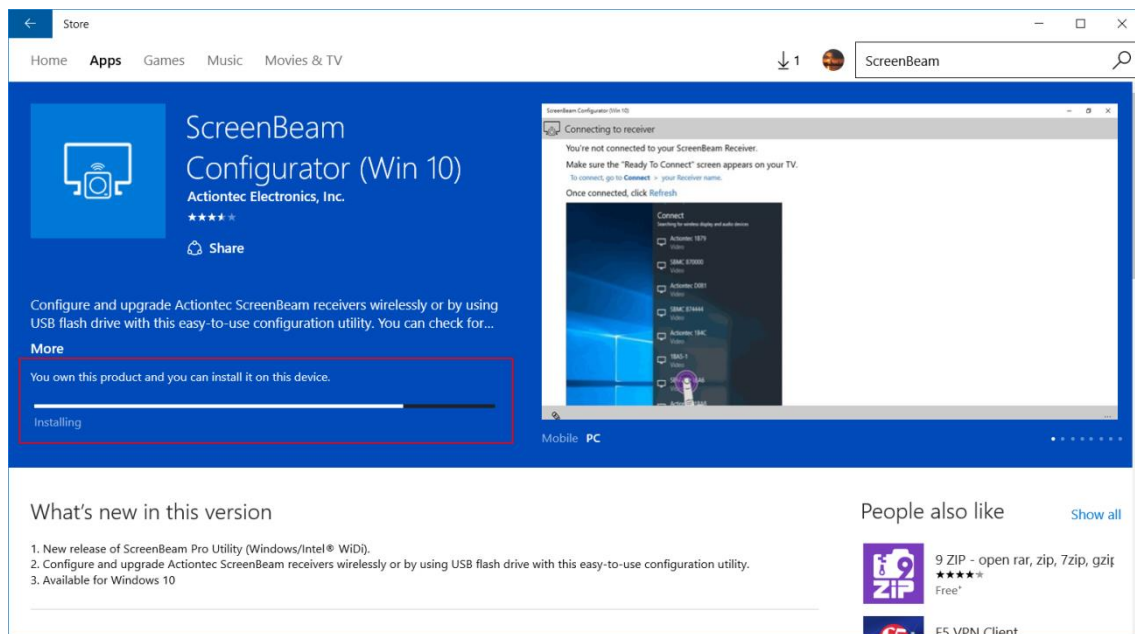
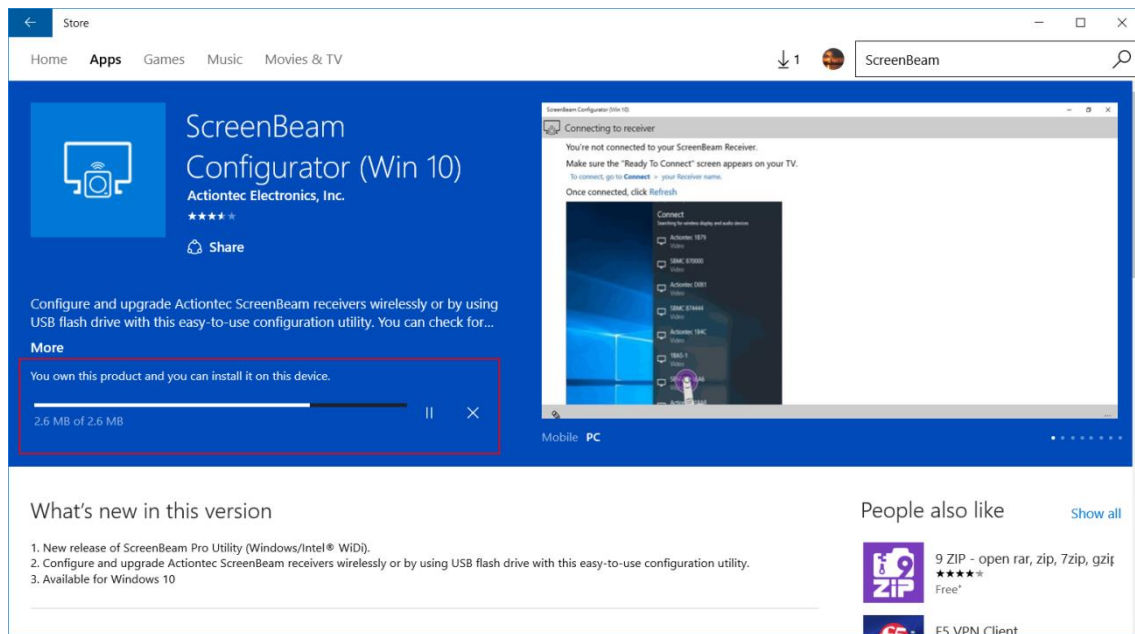


3. Tap the **ScreenBeam Configurator** item to view details.
4. On the app page, tap or click the **Install** button to install **ScreenBeam Configurator**.

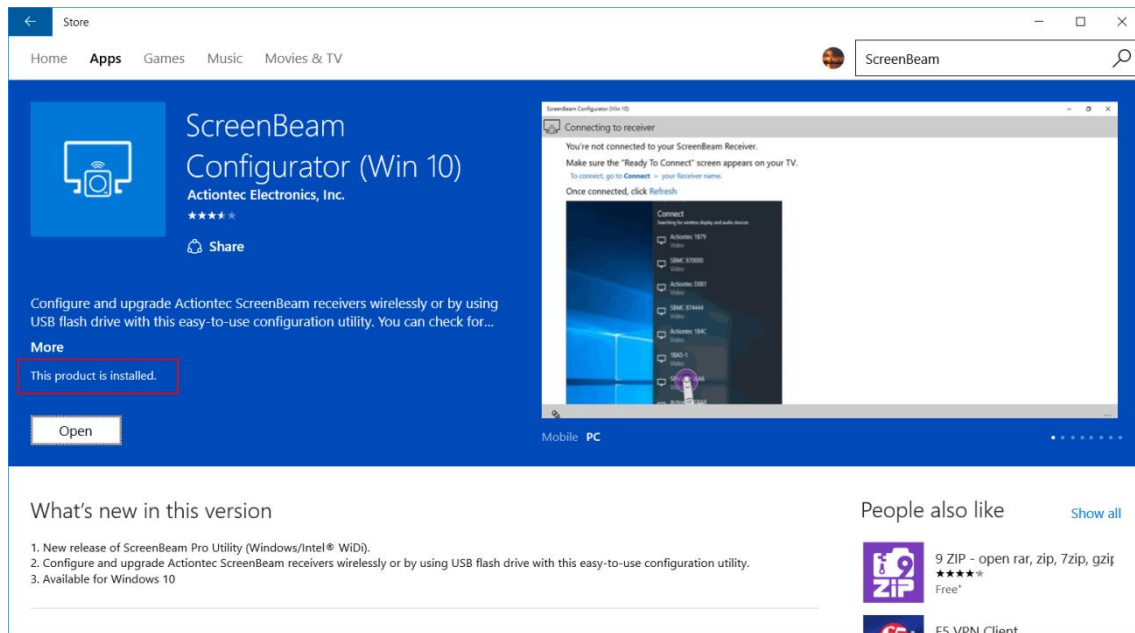


Note: You need to log into Microsoft Store.

5. The Microsoft Store downloads and installs the app.



6. After the app is installed, the message "This product is installed." is displayed.



The app is installed successfully. Now, you can launch the app to configure and upgrade your ScreenBeam Receivers.

Part III. Configuring ScreenBeam Receivers

With ScreenBeam Configurator (Win 10), you can configure your Receivers wirelessly or by using a USB flash drive.

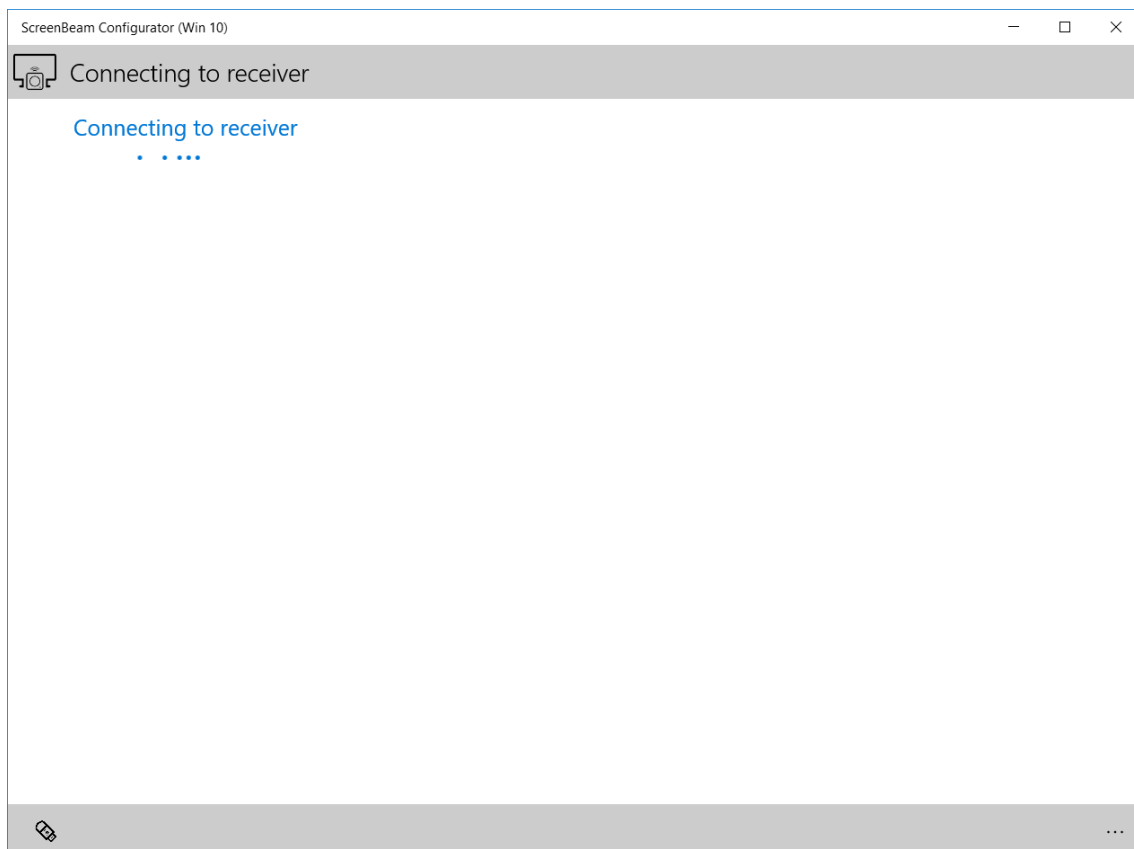
Note: The procedure for configuring ScreenBeam Receivers of different models may be different. Refer to your Receiver's User Manual for detailed instructions.

3.1. Configuring Receiver Wirelessly

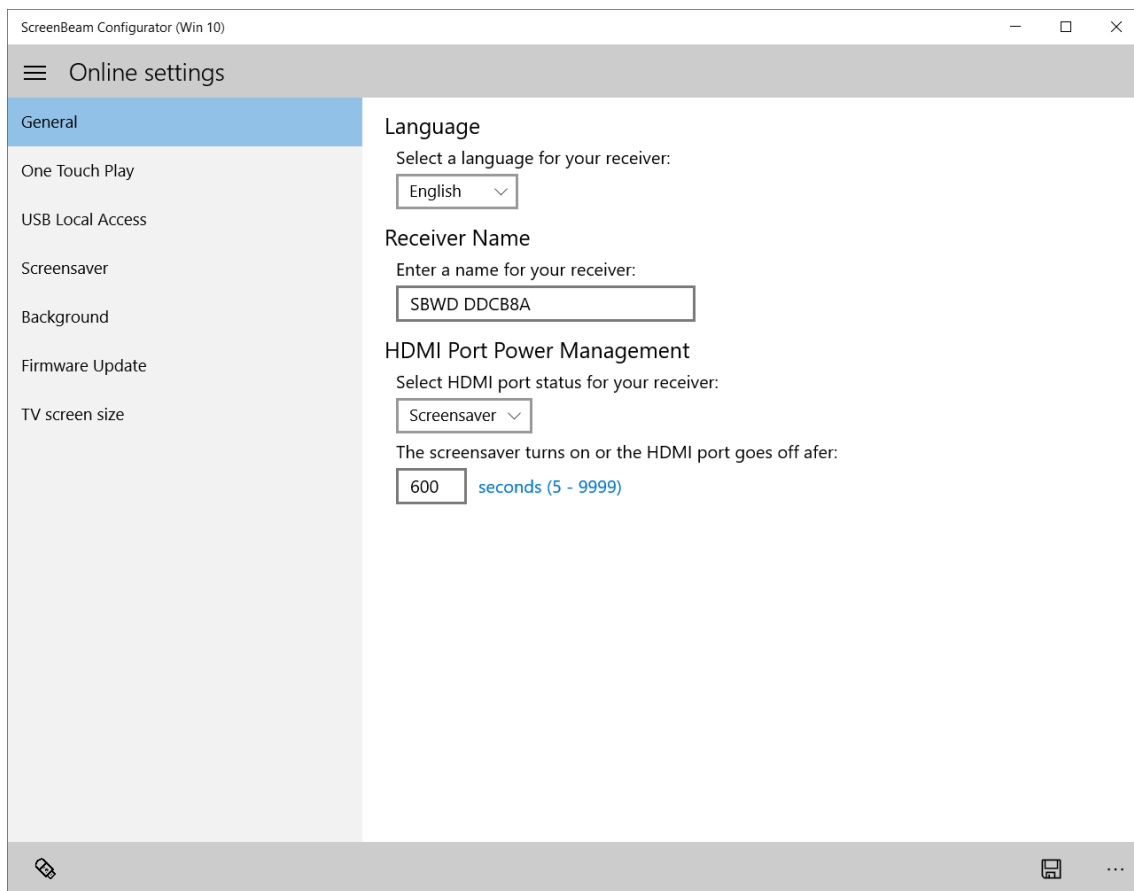
To launch ScreenBeam Configurator:

1. Verify that your ScreenBeam Receiver is powered on, with the **Ready To Connect** screen displayed on the connected display device.
2. Connect your Windows 10 device to your ScreenBeam Receiver. Refer to the Receiver's User Manual for connection instructions.
3. Locate and launch the ScreenBeam Configurator app on your Windows 10 device, and the app will connect to your Receiver automatically.

Note: Click **Refresh** if it doesn't connect to your Receiver successfully.



4. After the connection is established, the app displays the **Online settings** page.



ScreenBeam Configurator (Win 10)

Online settings

General

One Touch Play

USB Local Access

Screensaver

Background

Firmware Update

TV screen size

Language

Select a language for your receiver:

English

Receiver Name

Enter a name for your receiver:

SBWD DDCB8A

HDMI Port Power Management

Select HDMI port status for your receiver:

Screensaver

The screensaver turns on or the HDMI port goes off after:

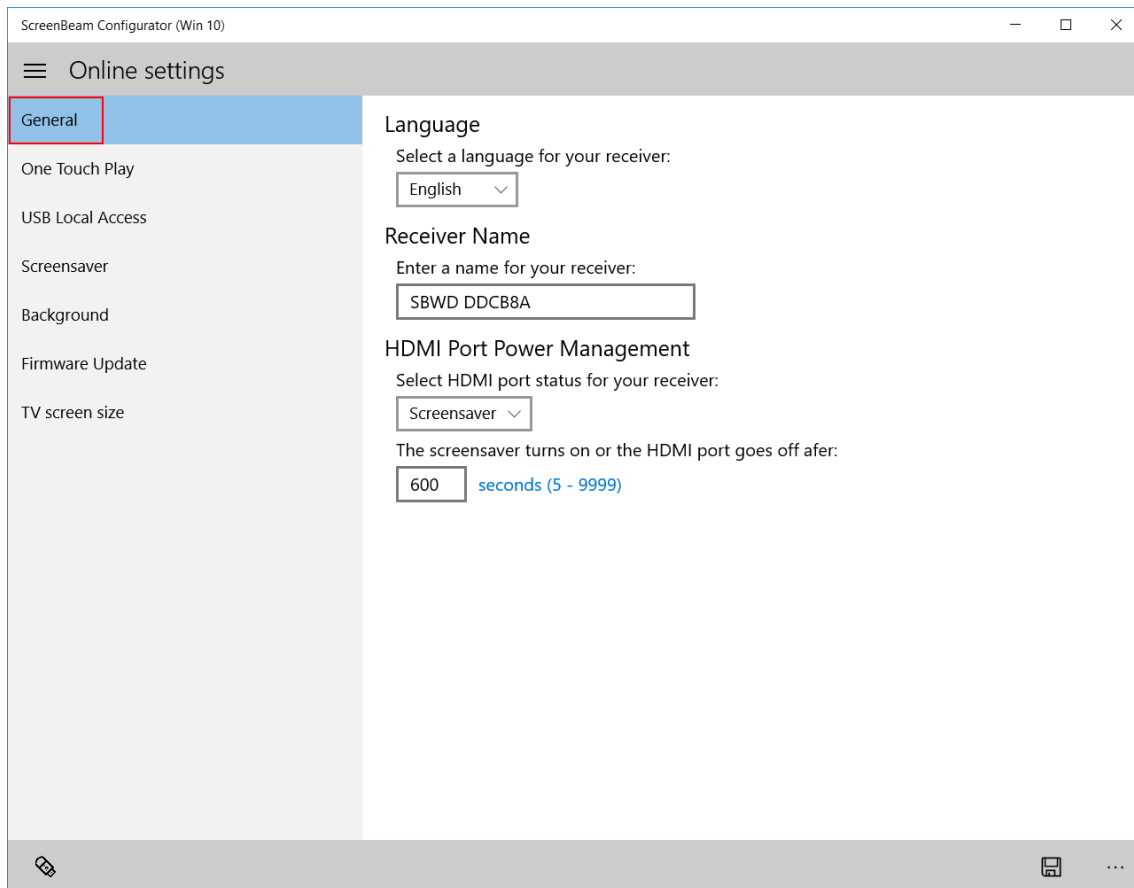
600 seconds (5 - 9999)

5. On the **Online settings** page, you can configure your Receiver wirelessly.
- Note:** Configuration options may be different for Receivers of different models. Refer to the Receiver's User Manual for detail.

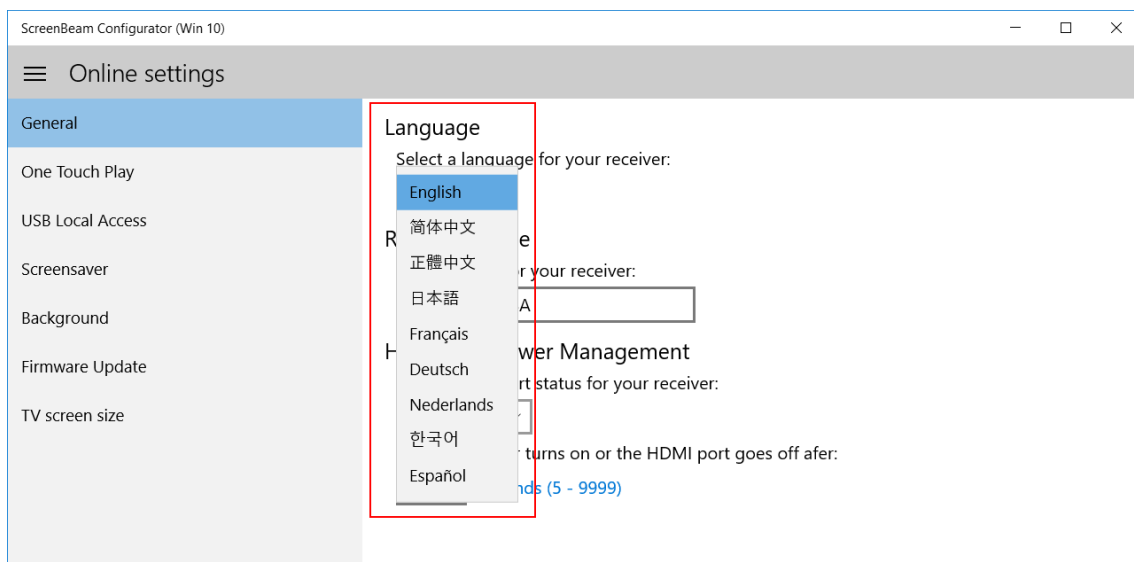
3.1.1. Selecting a Language

Follow the procedure below to select a display language for your Receiver:

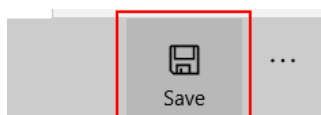
1. Select **General** in the **Online Settings** page.



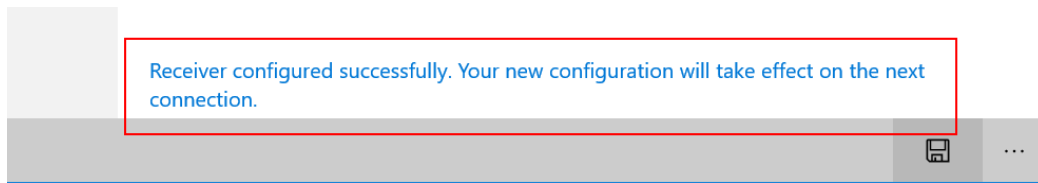
2. Go to the **Language** section and select your language in the **Language** drop-down box.
Currently available languages are English, Simplified Chinese, Traditional Chinese, Japanese, French, German, Dutch, Korean, and Spanish.



3. Click the **Save** button to save your settings.



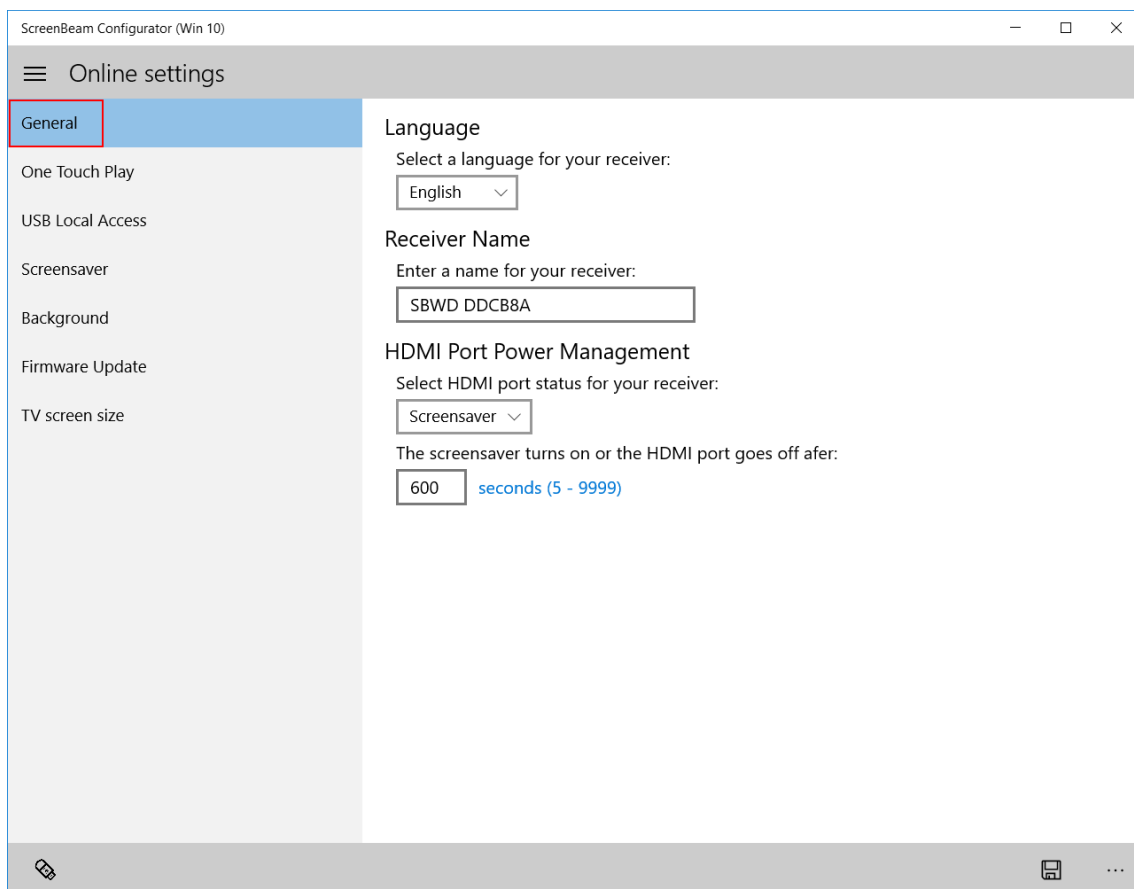
4. A message displays, showing that the Receiver is configured successfully. New settings take effect on the next connection.



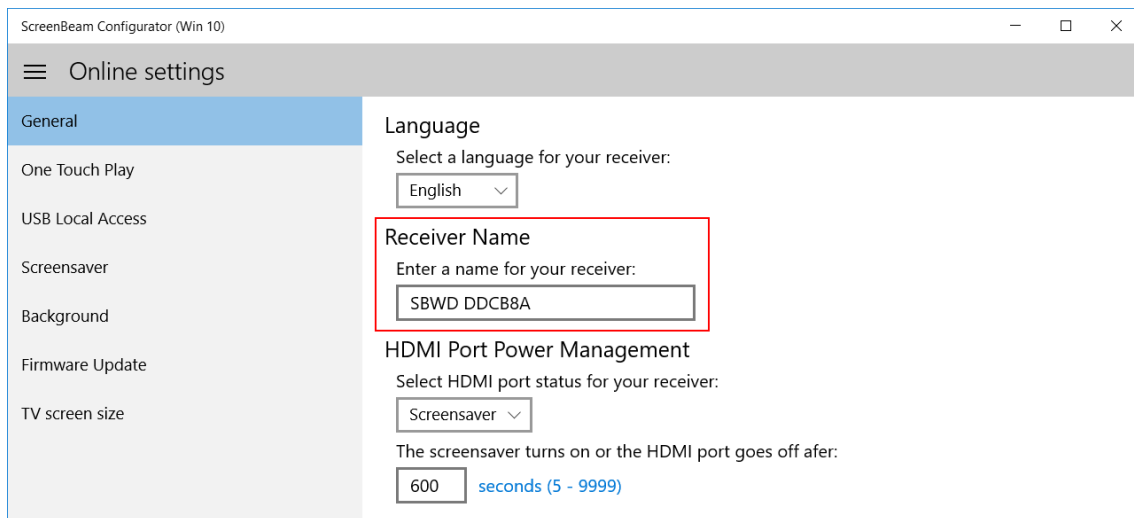
3.1.2. Renaming the Receiver

Follow the procedure below to rename your Receiver:

1. Select **General** in the **Online Settings** page to go to the general setting tab page.



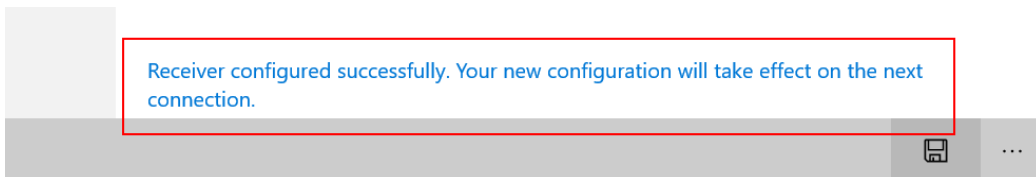
2. Go to the **Receiver Name** section, and type a new name for your Receiver in the **Receiver Name** box.



3. Click the **Save** button to save your settings.



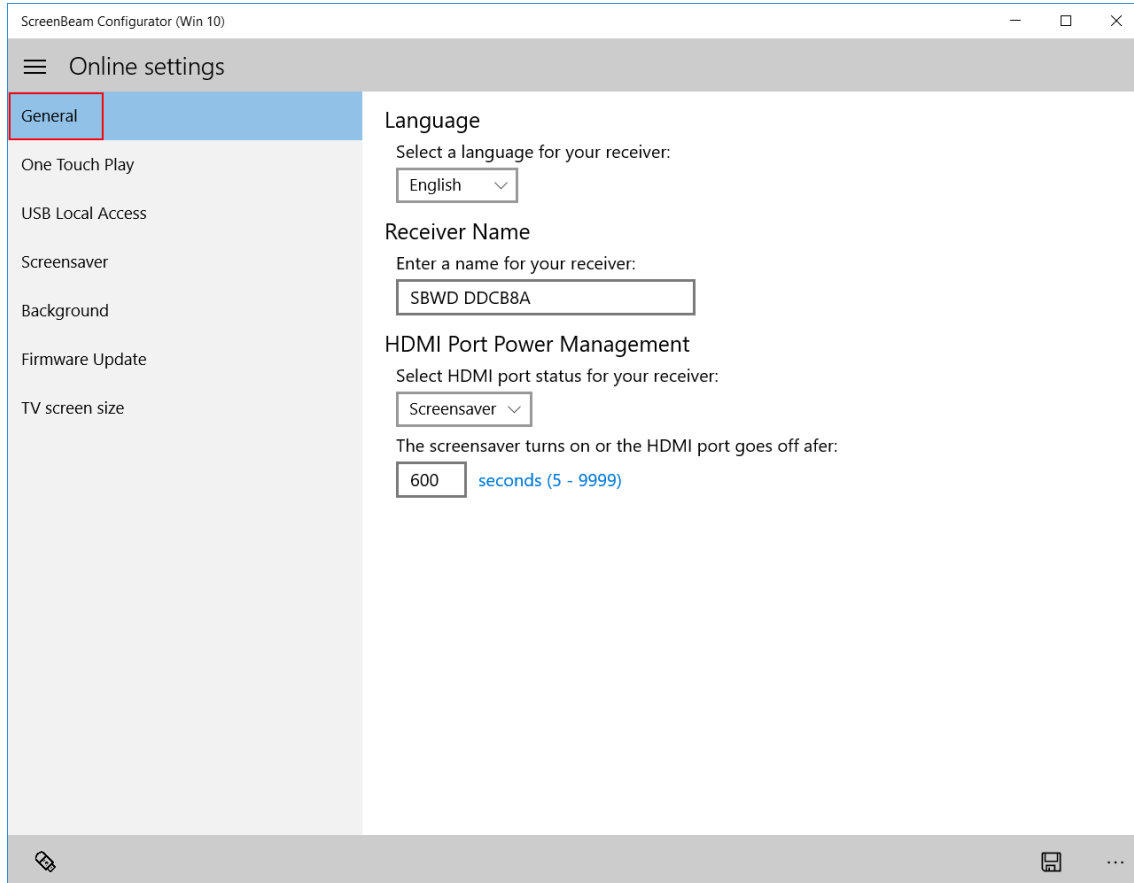
4. A message displays, showing that the Receiver is configured successfully. New settings take effect on the next connection.



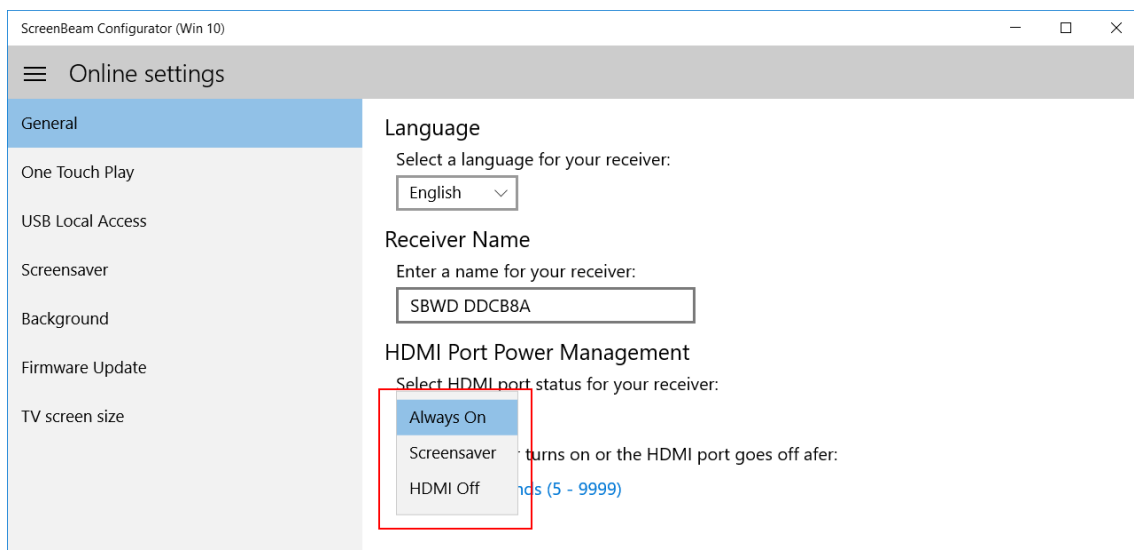
3.1.3. Managing the HDMI Port Output

To manage the HDMI port output of your Receiver:

1. Select **General** in the **Online Settings** page.



2. Go to the **HDMI Port Power Management** section, and select an HDMI output mode in the **HDMI Port Power Management** box. There are three options: **Always On**, **Screensaver**, and **HDMI Off**.



- **Always On:** The HDMI output remains on.

- **Screensaver:** The system runs the screensaver after the defined idle time expires. Users can define the idle time (5-9999 seconds) in the the appropriate text box (outlined in red, below).

ScreenBeam Configurator (Win 10)

Online settings

General

One Touch Play

USB Local Access

Screensaver

Background

Firmware Update

TV screen size

Language

Select a language for your receiver:

English

Receiver Name

Enter a name for your receiver:

SBWD DDCB8A

HDMI Port Power Management

Select HDMI port status for your receiver:

Screensaver

The screensaver turns on or the HDMI port goes off afer:

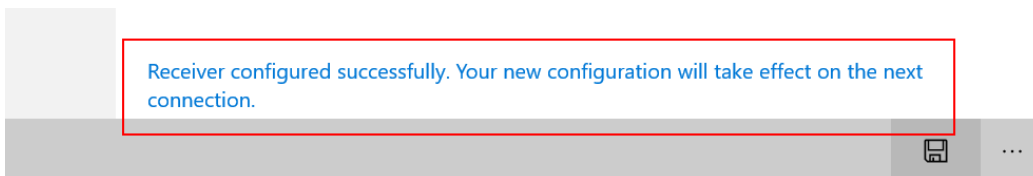
600 seconds (5 - 9999)

- **HDMI Off:** The HDMI output will be turned off after the defined idle time expires. Users can define the idle time (5-9999 seconds) in appropriate text box (outlined in red, above).

3. Click the **Save** button to save your settings.



4. A message displays, showing that the Receiver is configured successfully. New settings take effect on the next connection.



3.1.4. Setting up One Touch Play (HDMI-CEC)

There are two options for the **One Touch Play (HDMI-CEC)** function: **On**, and **Off**. After this function is enabled, the Receiver can wake up the connected display device and the display device will switch to the source that the Receiver connects to.

The display device will be woken up when one of the following conditions occurs:

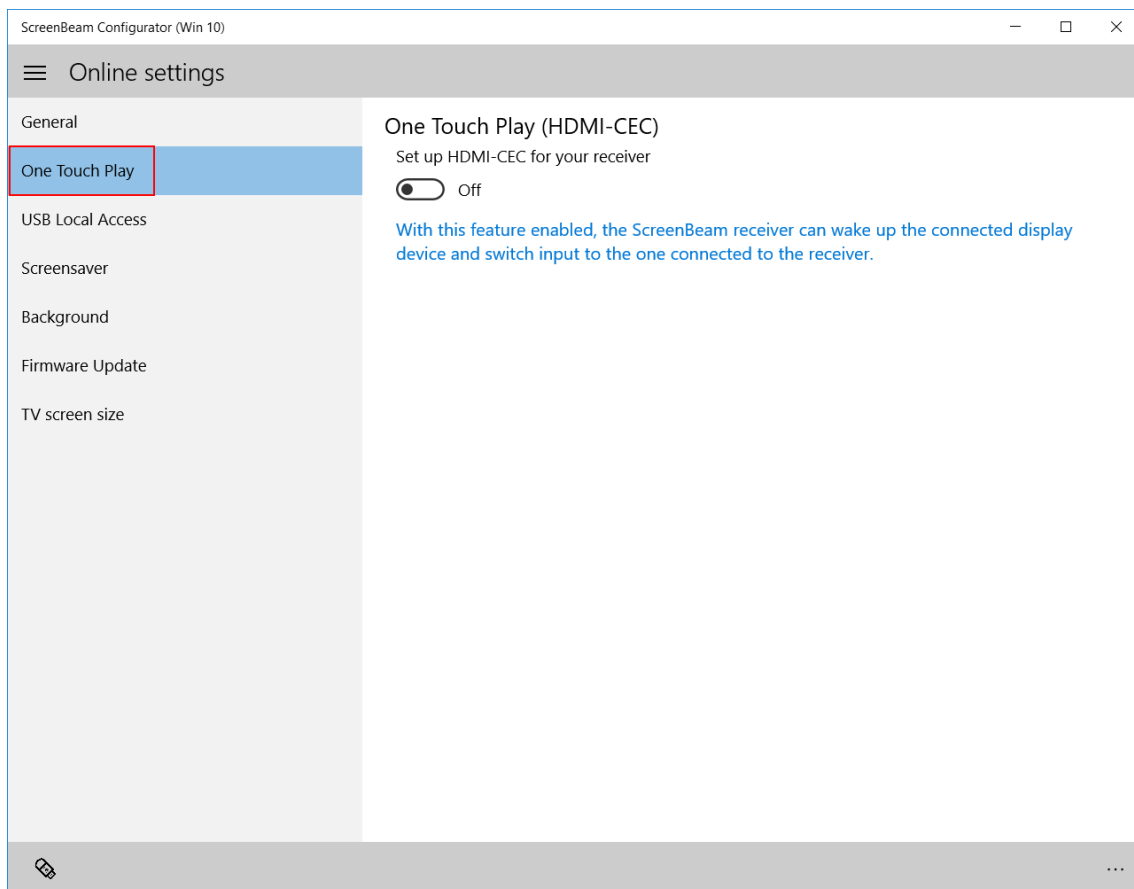
- when the Receiver is powered on
- when a connection to the Receiver is established
- when a powered-on Receiver is connected to the display device

Note: To use this function, the connected display device must support HDMI-CEC.

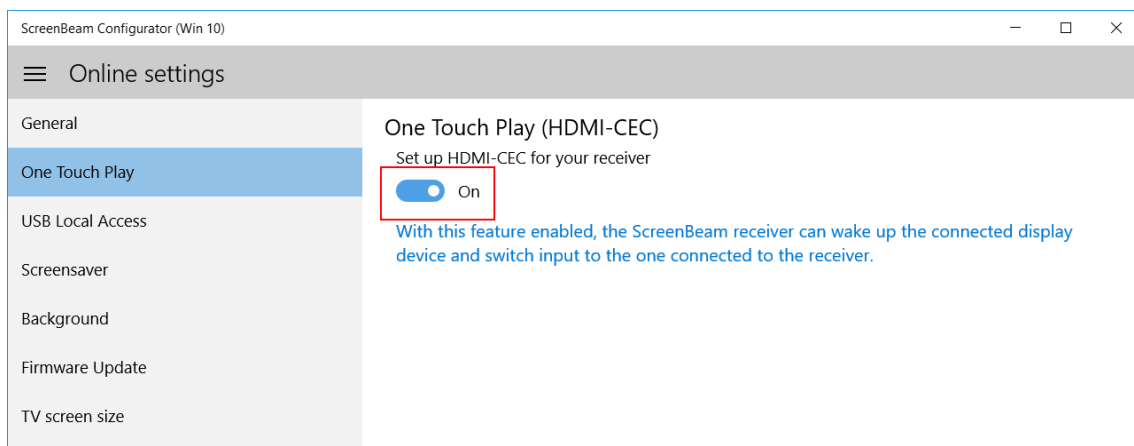
To set up One Tough Play (HDMI-CEC):

1. Select **One Touch Play** in the **Online Settings** page. The **One Touch Play** screen

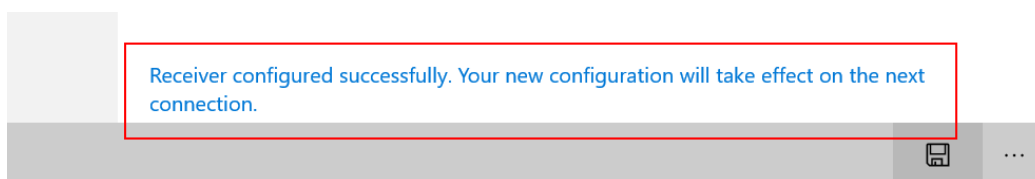
appears.



2. Tap or click the **One Touch Play (HDMI-CEC)** switch to turn this feature **On** or **Off**.



3. The new setting will be saved automatically.
4. A message displays, showing that the Receiver is configured successfully. New settings take effect on the next connection.

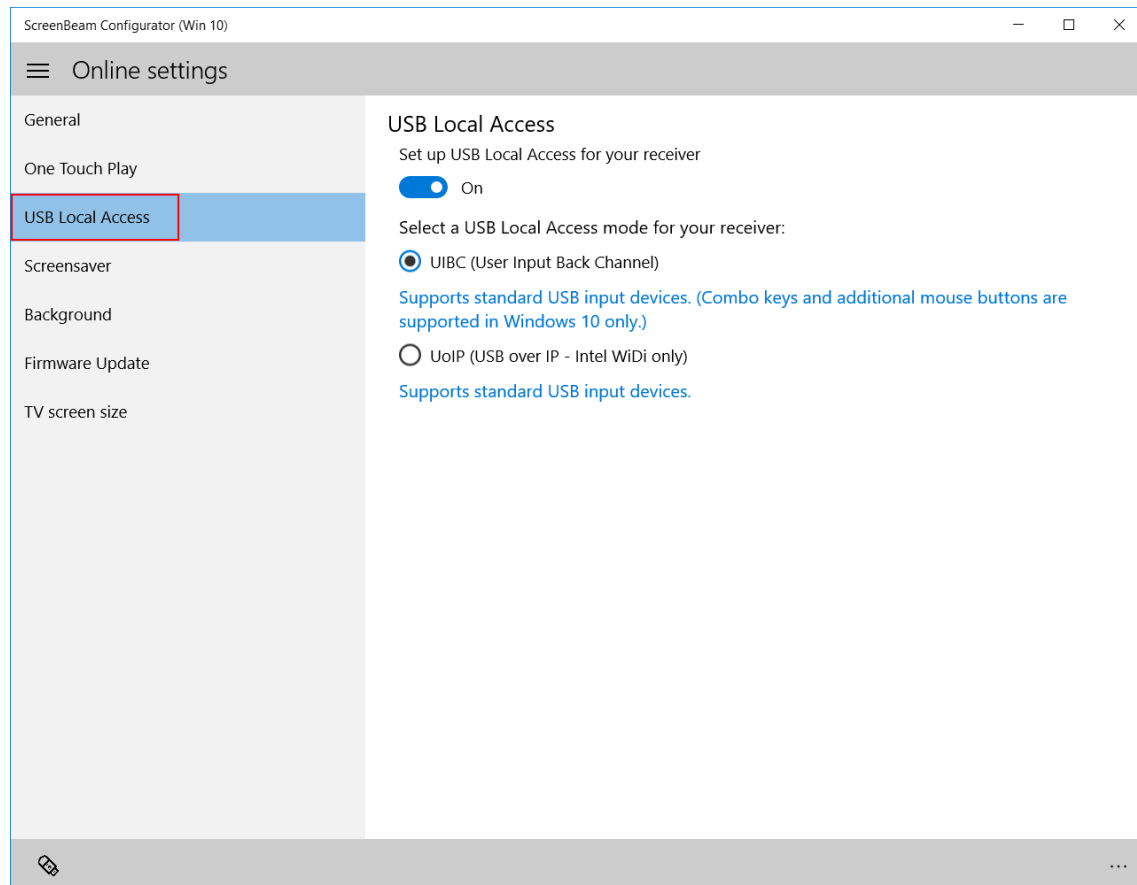


3.1.5. Setting up USB Local Access

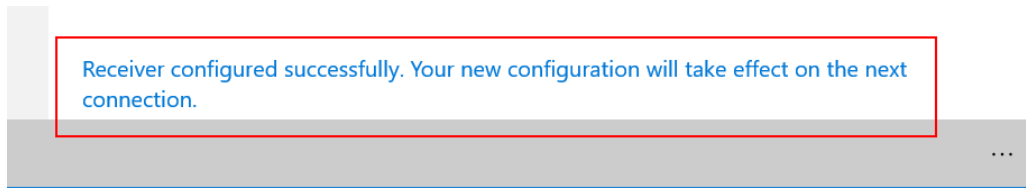
A USB port is provided on the ScreenBeam Receiver for various uses (i.e., USB over network control).

To set up the Receiver's USB Local Access feature:

1. Select **USB Local Access** in the **Online Settings** page. The **USB Local Access Screen** appears.



2. Configure the **USB Local Access** feature according to practical requirements. Tap or click the **USB Local Access** switch to turn it off or on.
 - **On:** Activates the USB over Network Control function. User can then control the source device by connecting a keyboard/mouse to the Receiver via the USB port on the USB cable.
 - **UIBC:** The connected keyboard/mouse supports full functions.
Note: For operating systems other than Windows 10, the connected keyboard/mouse does not support combo keys or mouse right-clicks.
 - **UoIP:** The connected keyboard/mouse supports full functions.
Note: UoIP is compatible with Intel WiDi only.
 - **Off:** USB over Network control (UIBC and UoIP) is disabled.
3. New settings will be saved automatically.
4. A message displays, showing that the Receiver is configured successfully. New settings take effect on the next connection.

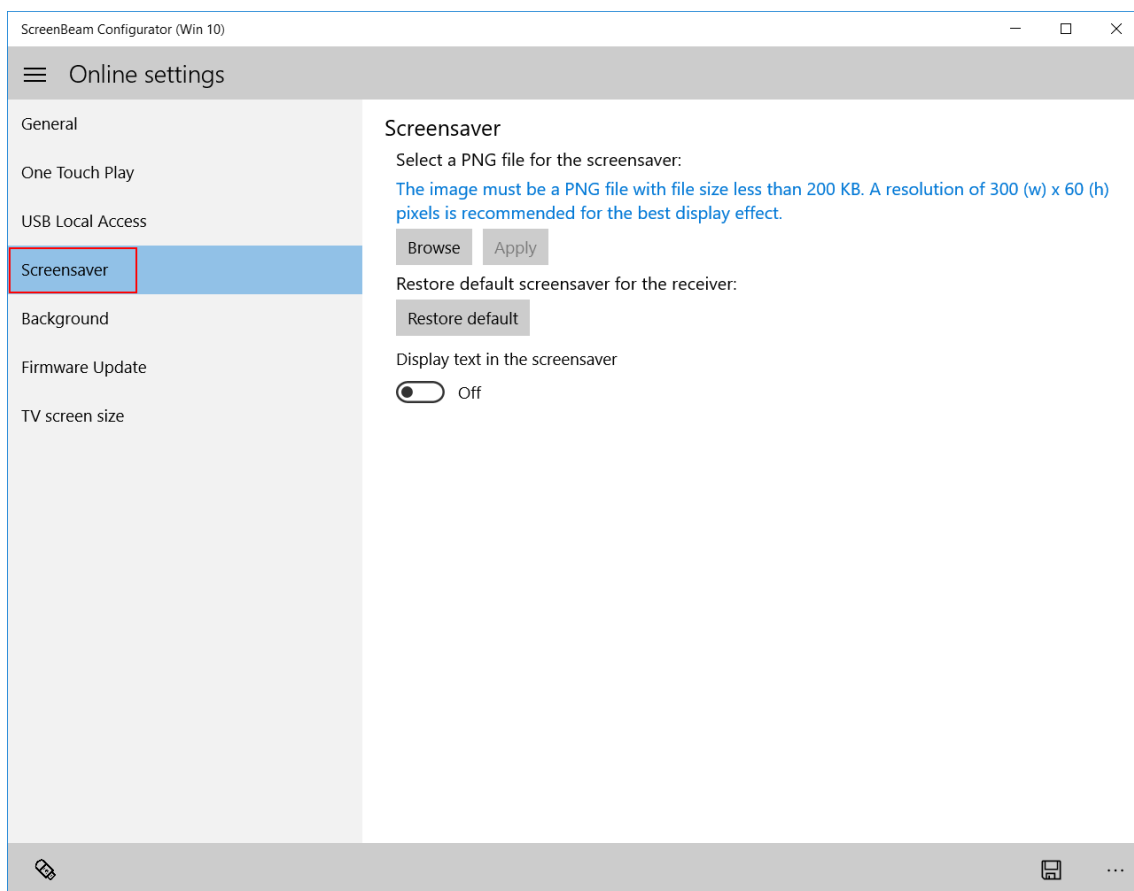


3.1.6. Setting up Screensaver

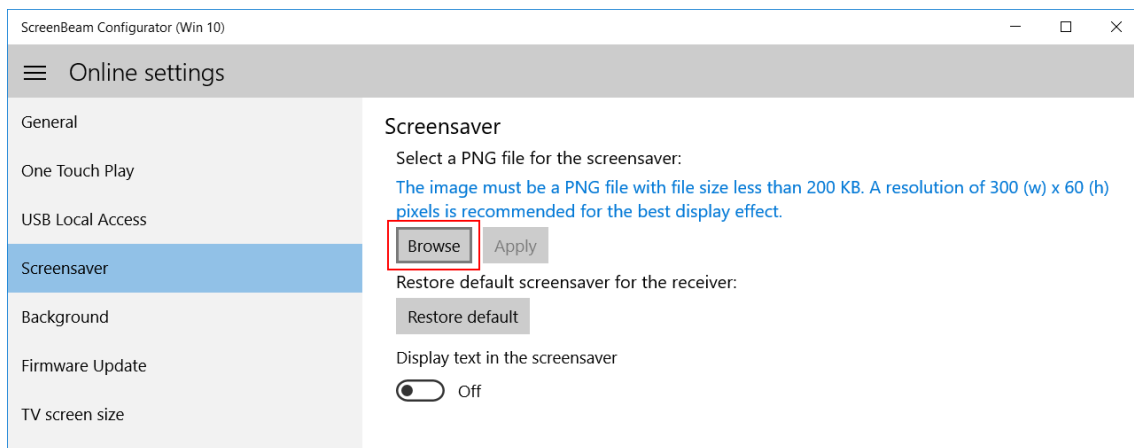
Users are allowed to customize an image and text for the Receiver's screensaver.

To customize the screensaver for your Receiver:

1. Select **Screensaver** in the **Online Settings** page. The **Screensaver** screen appears.



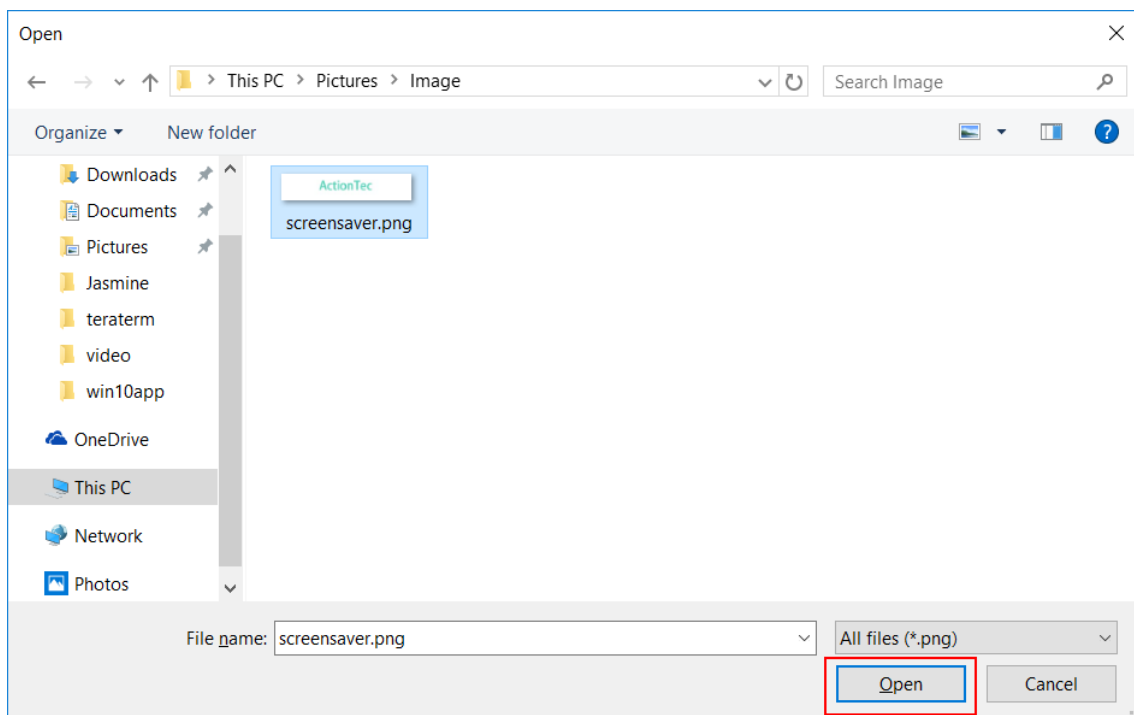
2. Customize an image and/or text for the screensaver.
 - **Customizing an image**
 - a. Tap or click the **Browse** button to select your image.



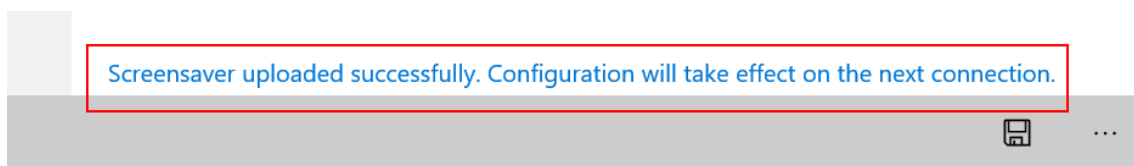
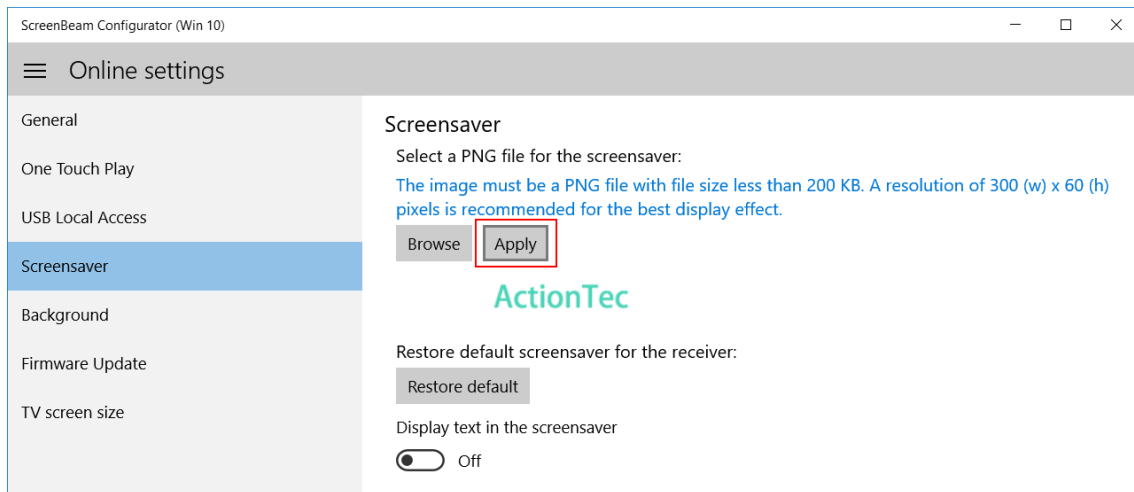
Note:

- Only “.png” images are supported.
- The image file must be less than 200 KB.
- Recommended resolution is 300*60 (width*height) pixels.
- To restore the default image, click **Restore default**.

b. After you have selected your image, tap or click the **Open** button to confirm.

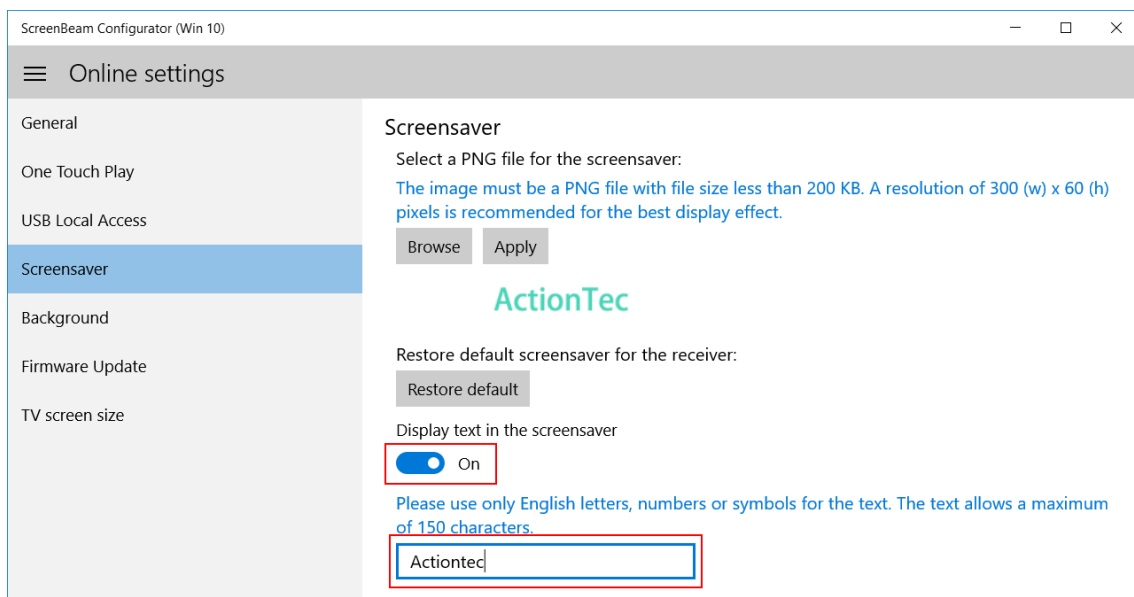


c. Tap or click the **Apply** button to upload the image to the Receiver. A message is displayed, indicating that the image is uploaded successfully.

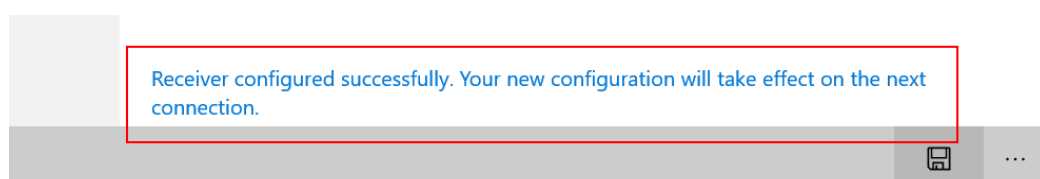


- **Customizing the text**

- Tap or click the **Display text** switch to turn on text display for the screensaver, then type your text in the text box.



- Tap or click the **Save** button to save your text.
- A message displays, showing that the Receiver is configured successfully. New settings take effect on the next connection.

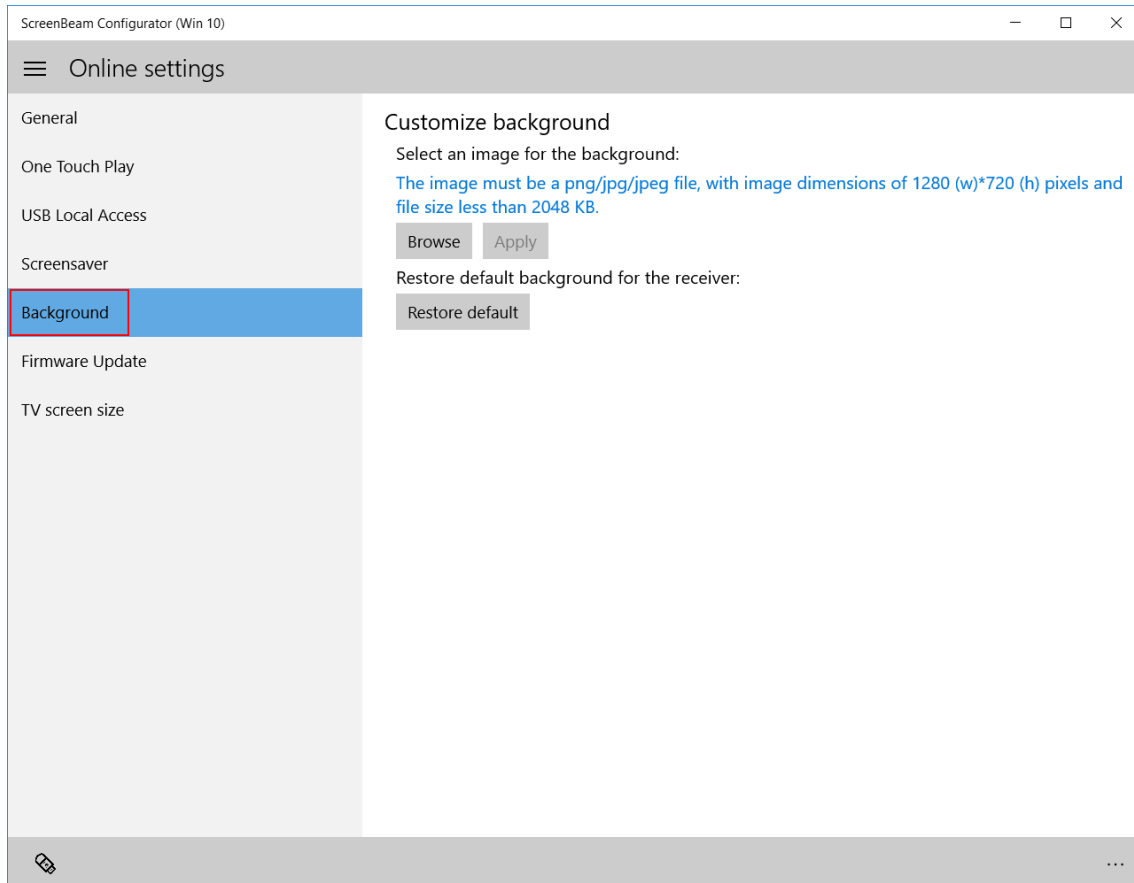


3.1.7. Setting up Background

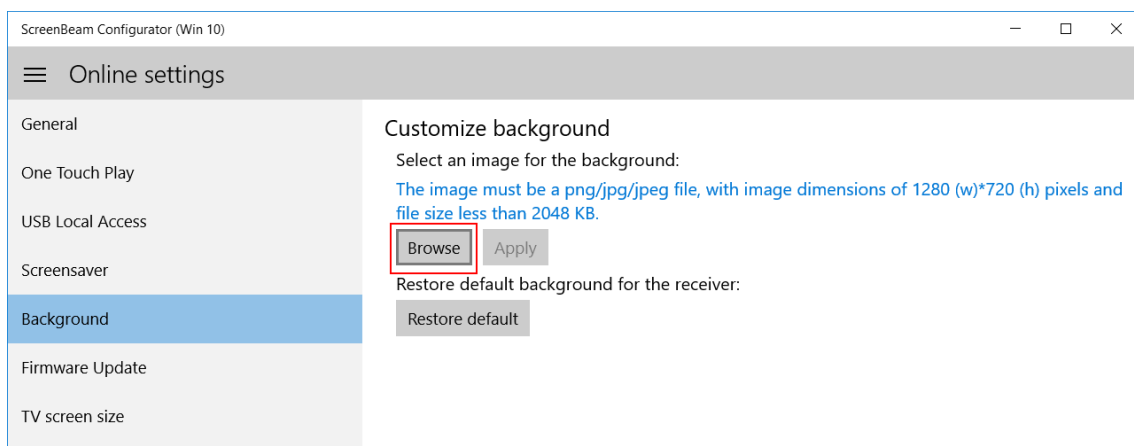
The ScreenBeam Configurator allows you to customize background for the **Ready To Connect** screen.

To change the background image:

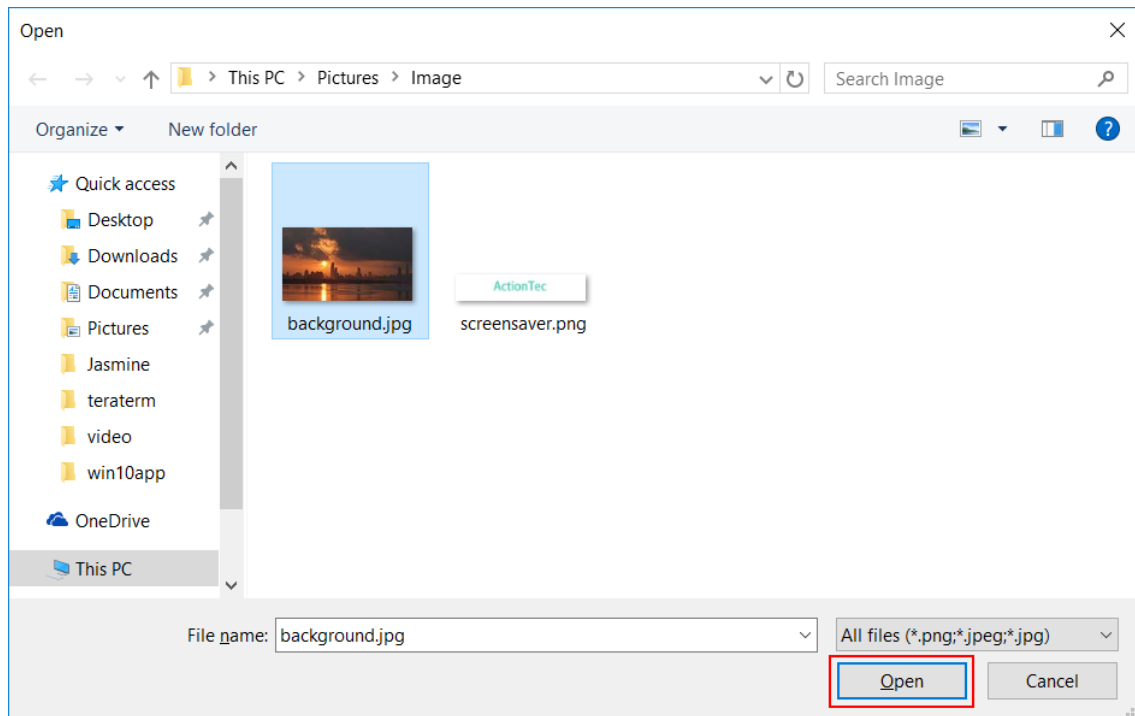
1. Select **Background** in the **Online Settings** page. The **Customize background** screen appears.



2. Tap or click the **Browse** button to select your image.

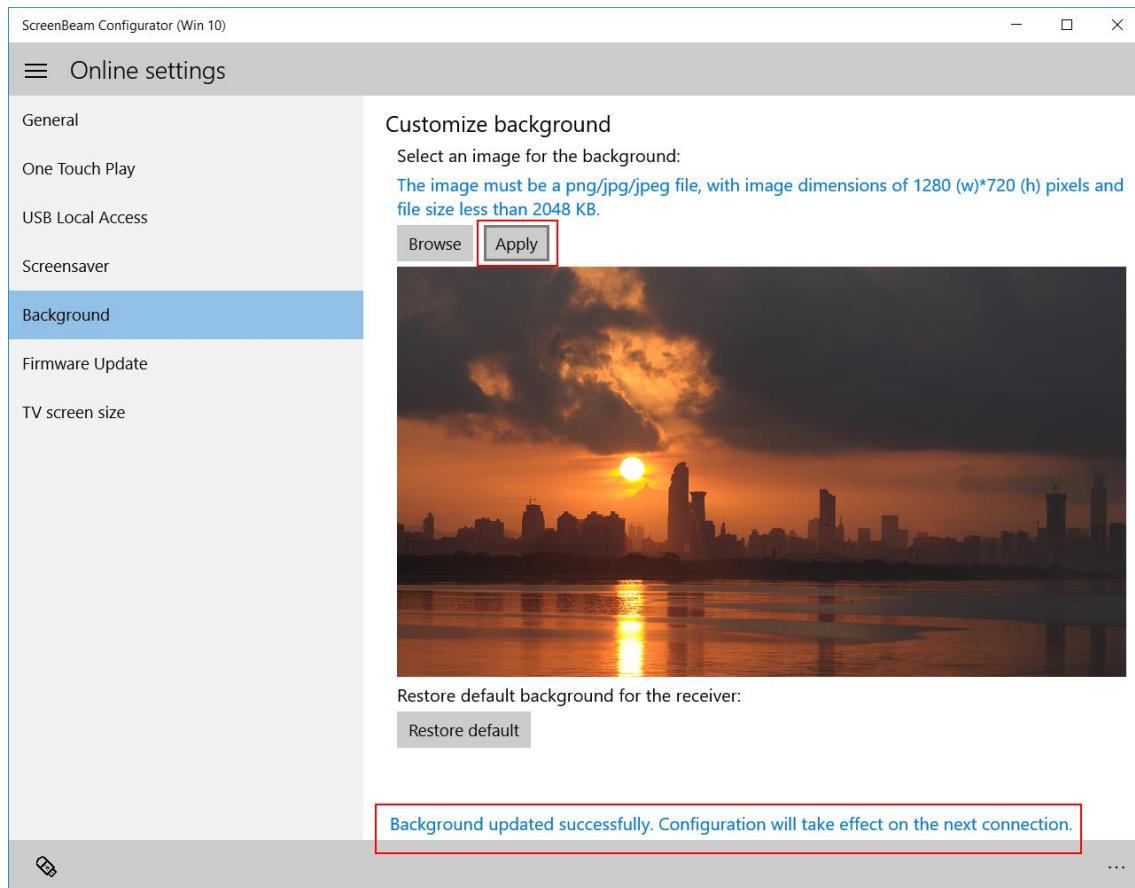


3. After you have selected your image, tap or click the **Open** button to confirm.



Specifications for the background image are listed below:

- The image format must be a .png/.jpg/.jpeg file.
 - Recommended image dimension is 1280 (width)*720 (height) pixels.
 - The image file size must be less than 2048 KB.
4. You will see a preview of the selected image. Tap or click **Apply** to upload the image to the Receiver. A message is displayed, indicating that the image is uploaded successfully.



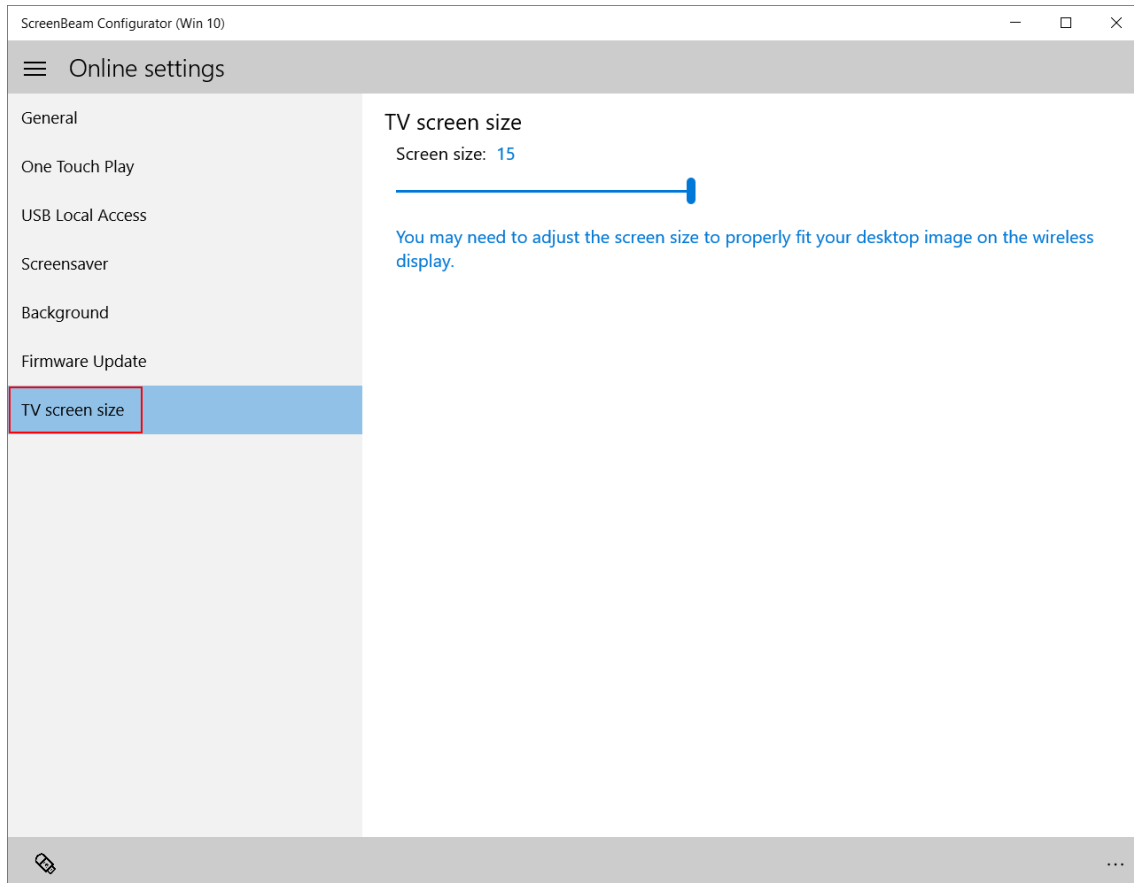
Note: To use the default background, click **Restore default**.

3.1.8. Adjusting the TV Screen Size

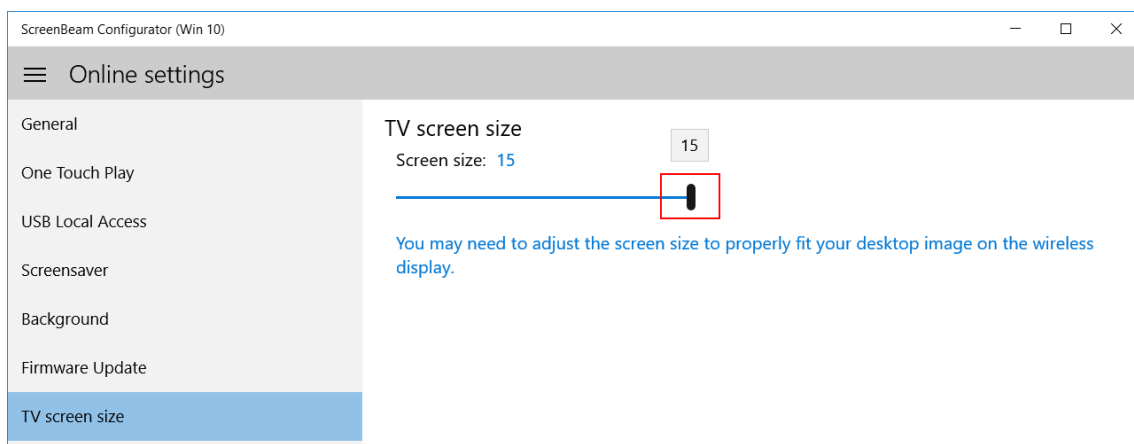
If the picture on the HDTV screen is overscanned—that is, the picture looks too big to fit on the screen—adjust the slider until the entire picture appears on the HDTV screen.

To adjust the TV screen size:

1. Select **TV Screen Size** in the **Online Settings** page. The **TV screen size** screen appears.



2. Drag the slider to adjust the size of the output screen. New size takes effect immediately.

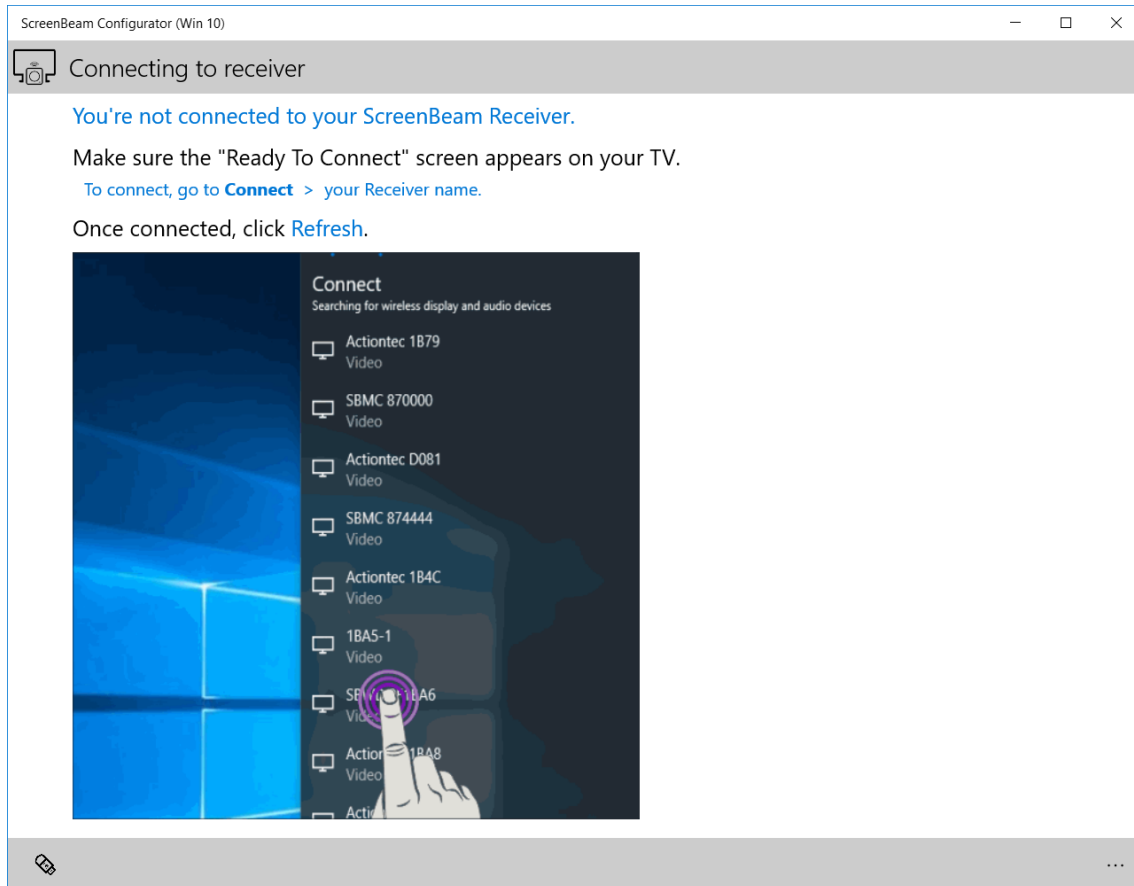


Note: This feature is available when your device has been connected to your Receiver.

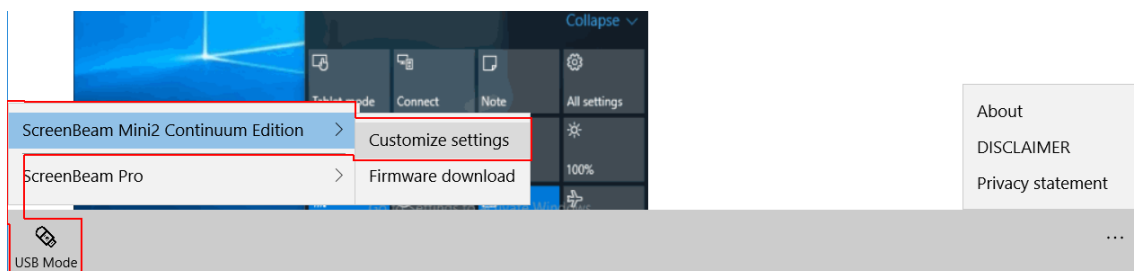
3.2. Configuring Receiver by USB

To configure your Receiver by using a USB flash drive:

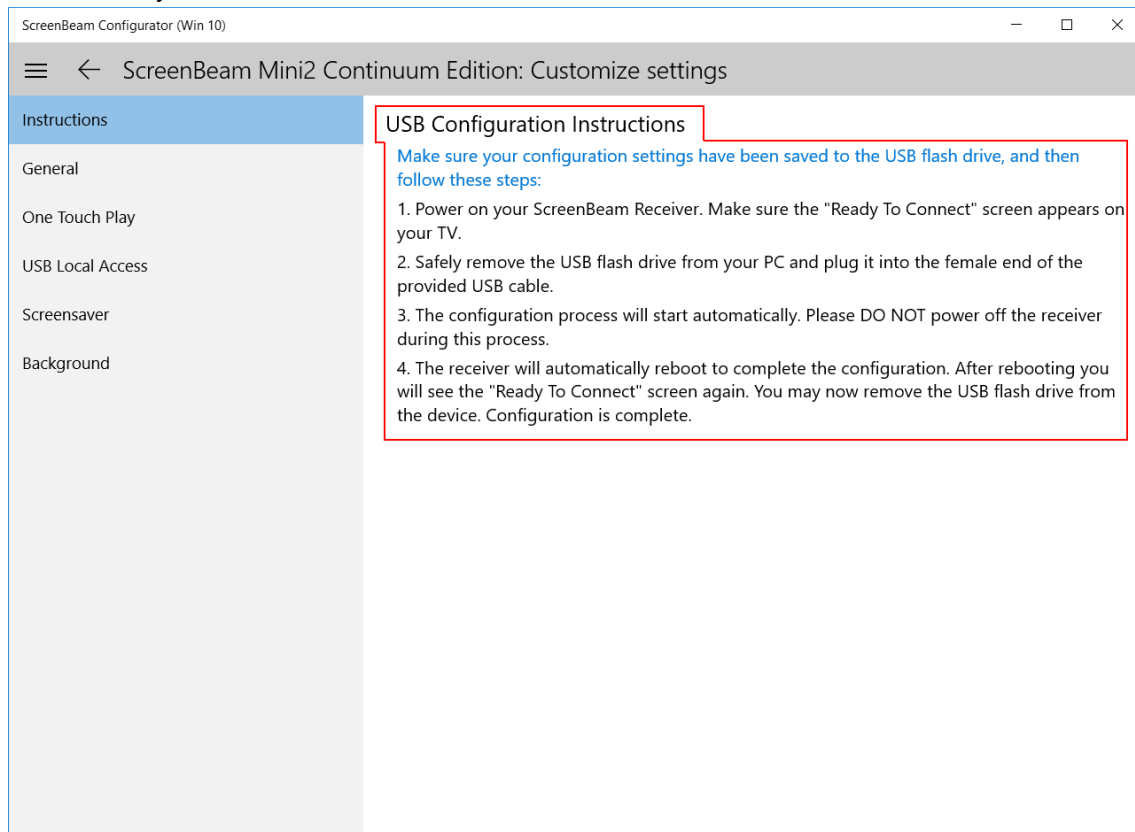
1. Prepare a FAT32 formatted USB flash drive, and plug it into your Windows 10 device.
2. Locate and launch the **ScreenBeam Configurator** app on your Windows 10 device.



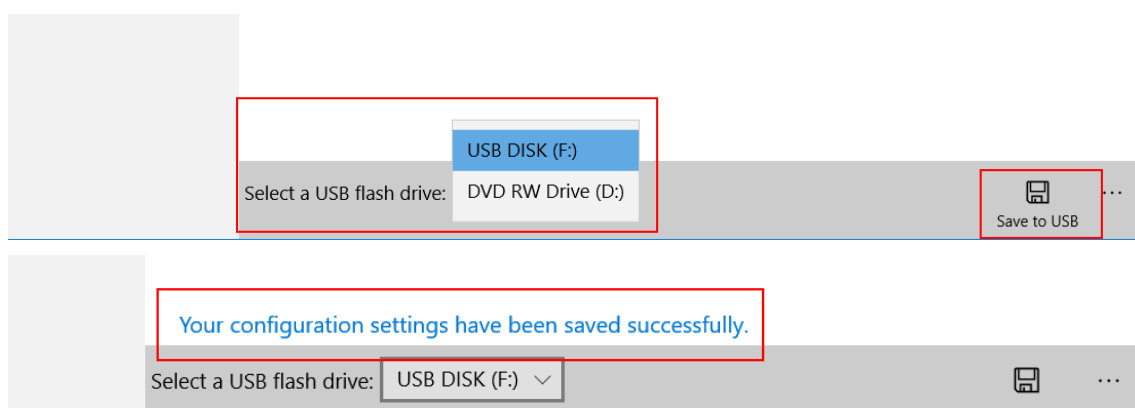
3. Select **USB Mode** -> **Receiver type** -> **Customize settings**.



4. The **Customize Settings** page appears. Read the USB configuration instructions carefully.



5. Configure settings for your Receiver in the **Customize settings** page. Refer to Section 3.1. Configuring Receiver Wirelessly for detail.
6. Select your USB flash drive, and click the **Save to USB** button to save your settings to the selected USB flash drive. A message displays, indicating that your settings are saved to the USB flash drive successfully.



Note: Default settings will be saved for the items that are not changed. Check all of your settings again before saving them.

7. Follow the **USB Configuration Instructions**, as shown in step 4, to configure your Receiver.

Part IV. Updating Firmware for ScreenBeam Receivers

With ScreenBeam Configurator (Win 10), firmware updates for your Receiver are accomplished with just a few taps on the screen.

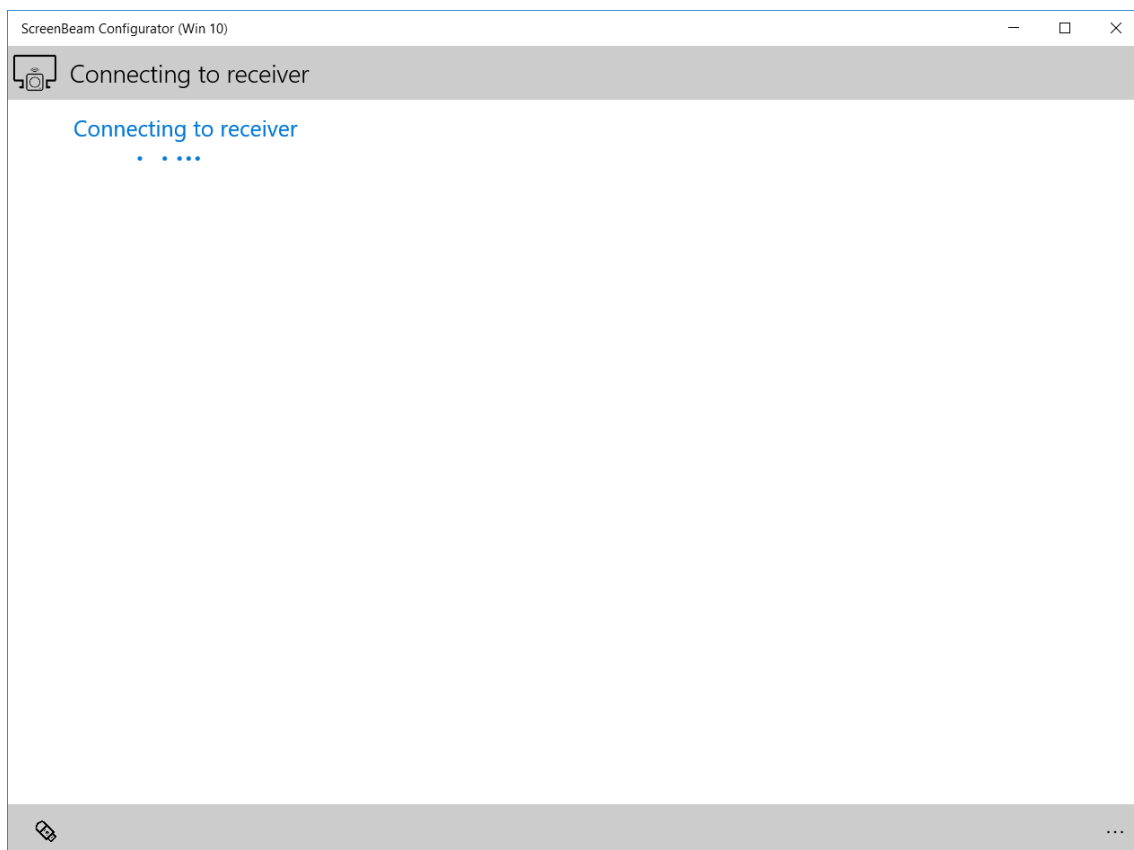
Note: The procedure for updating firmware for ScreenBeam Receivers of different models may be different. Refer to your Receiver's User Manual for detailed instructions.

4.1. Updating Firmware Wirelessly

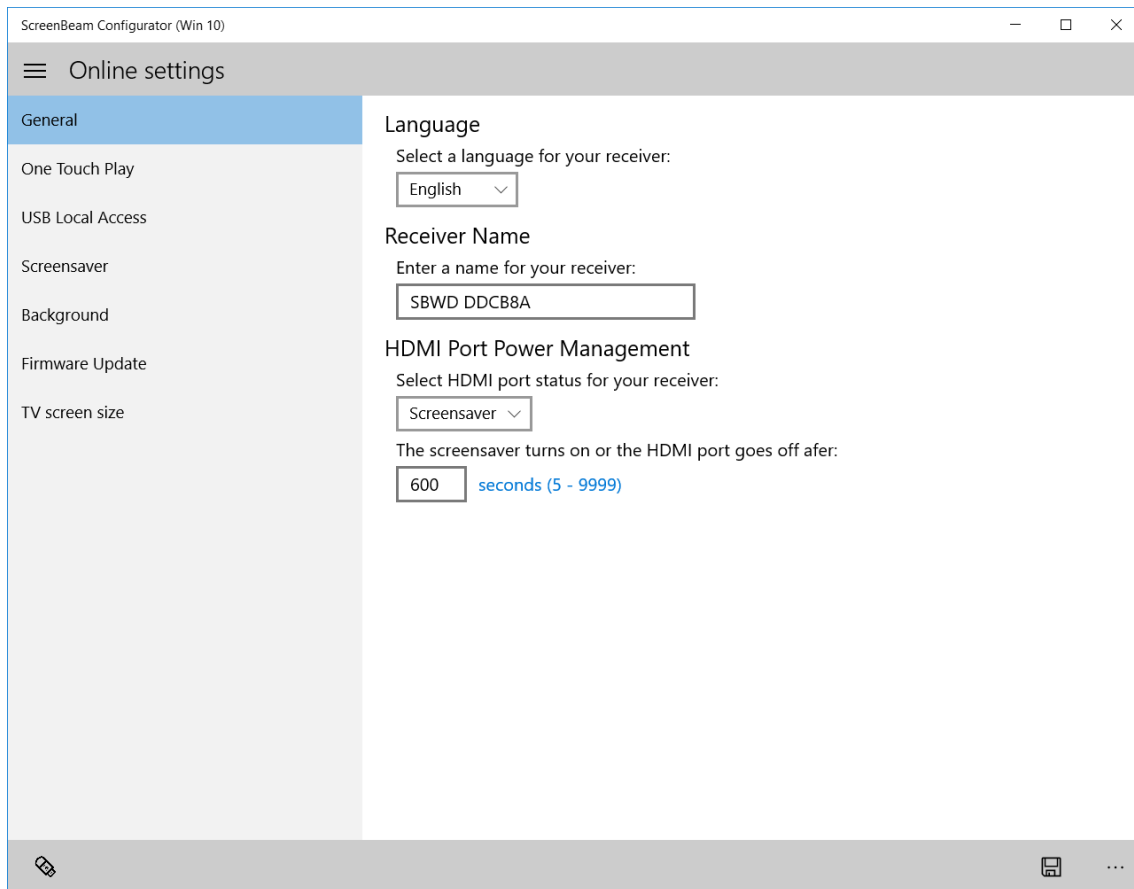
To update firmware for your Receiver wirelessly:

1. Make sure you have access to the Internet.
2. Verify that your ScreenBeam Receiver is powered on, with the **Ready To Connect** screen displayed on the connected display device.
3. Connect your Windows 10 device to your ScreenBeam Receiver.
4. Locate and launch the ScreenBeam Configurator app on your Windows 10 device, and the app will connect to your Receiver automatically.

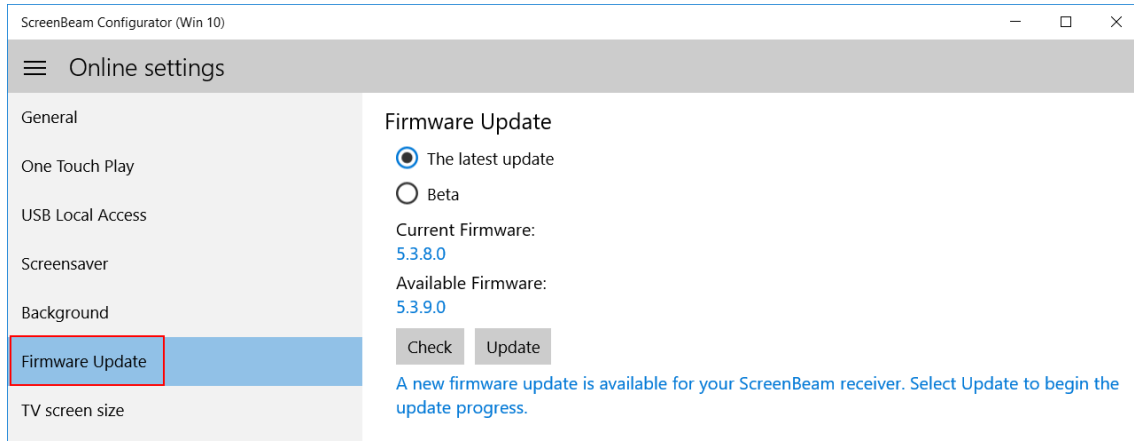
Note: Click the **Refresh** button if it doesn't connect to your Receiver successfully.



5. After the connection is established, the app displays the **Online settings** page.

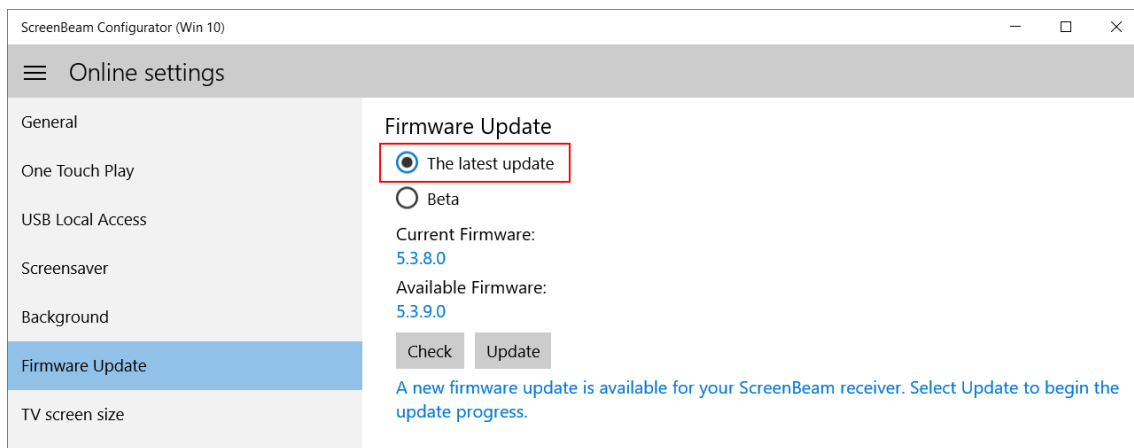


6. On the **Online settings** page, tap or click **Firmware Update** in the left pane.

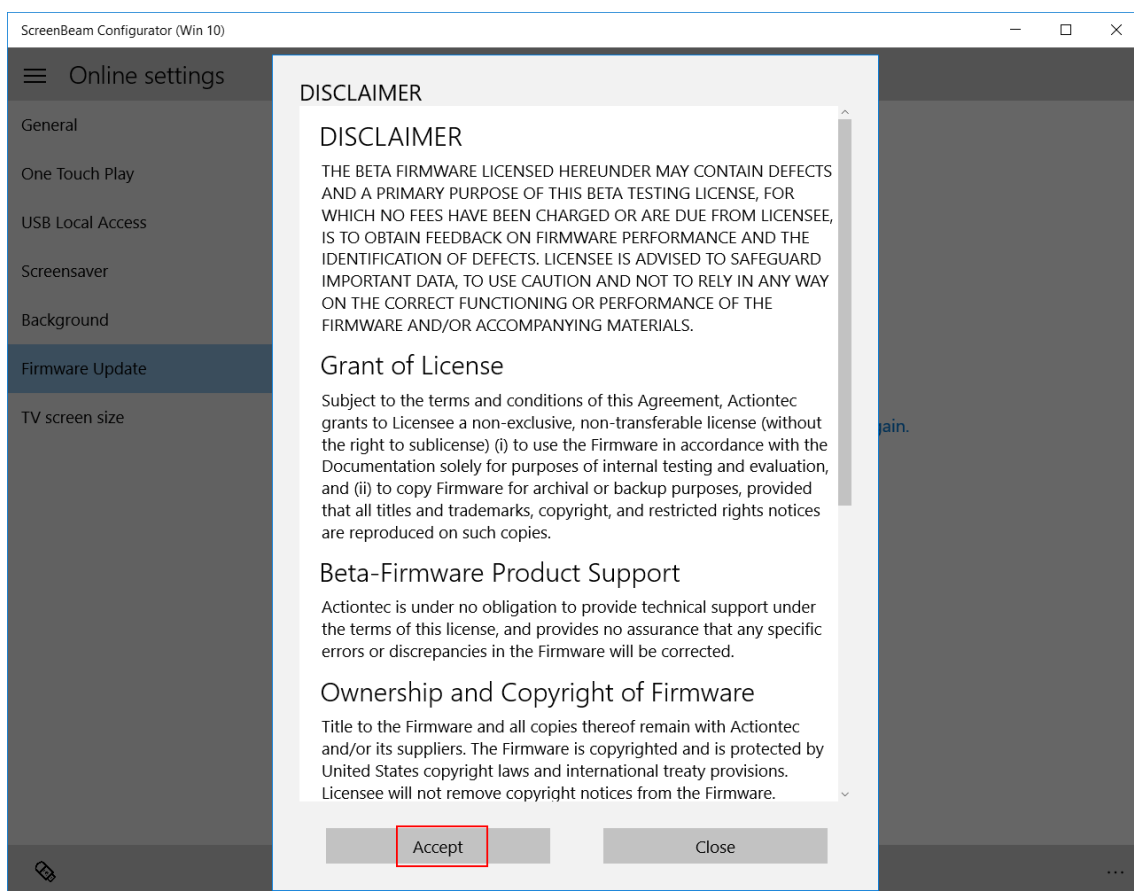


7. Select a type of firmware. The app will check for new firmware automatically.

- **The latest update:** The firmware is comprehensively tested before it is released. We recommend you download this type of firmware.
- **Beta:** The firmware is for test purposes only.

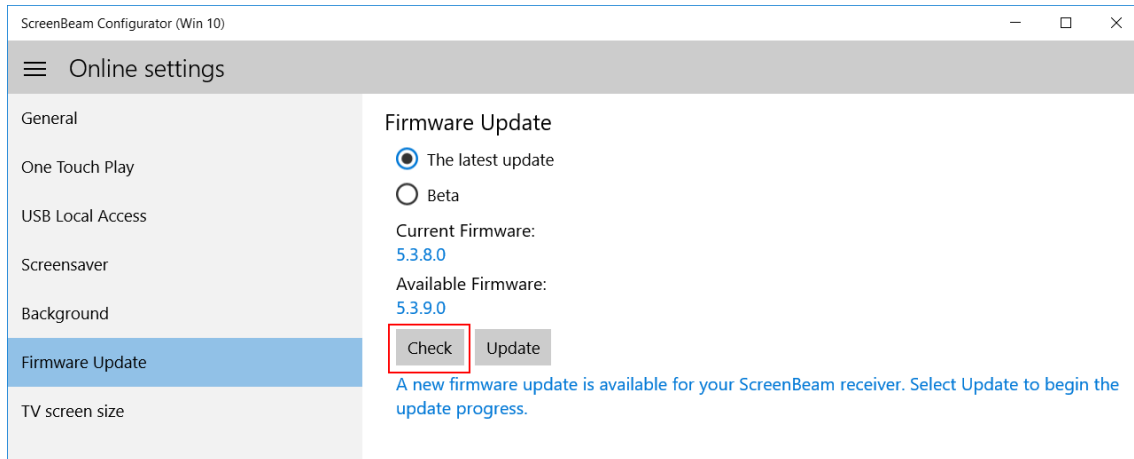


Note: If you have selected the Beta firmware, you must agree to the Beta firmware Disclaimer. Click **Accept** to agree, and continue.

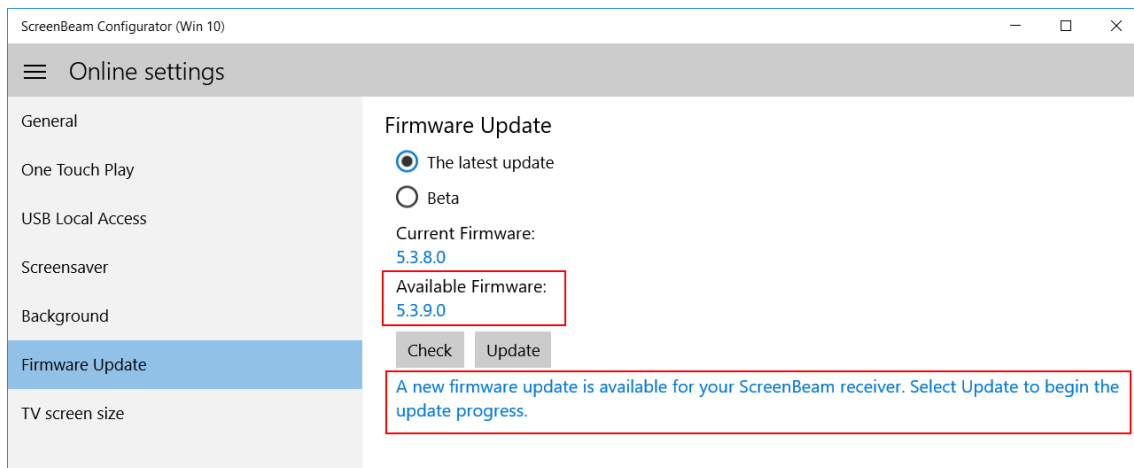


8. The app will check for new firmware for your Receiver automatically. You can also tap

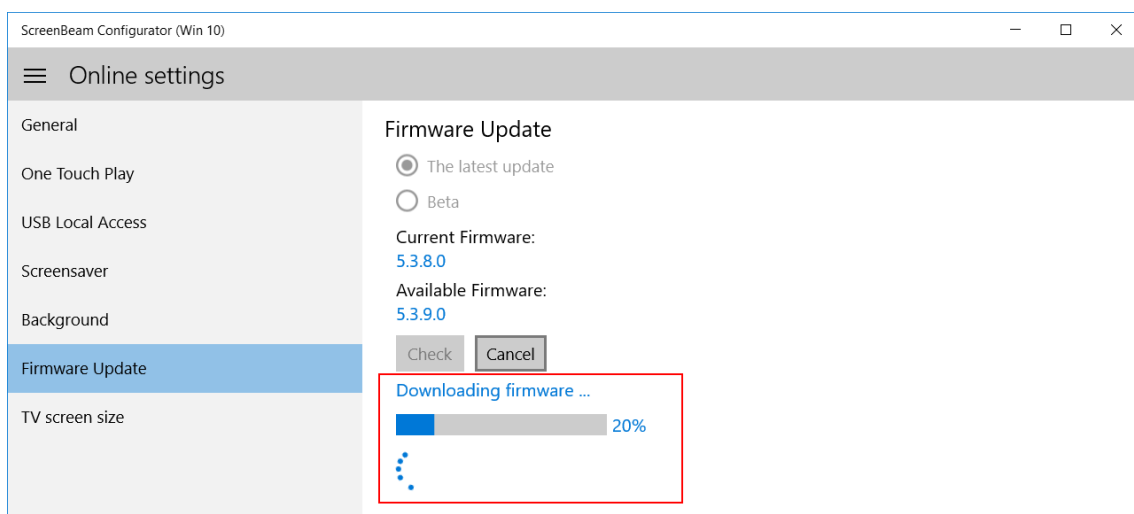
the **Check** button to check if there is new firmware available.



9. The version number will appear on the **Available Firmware** field. If there is new firmware available, **A new firmware update is available ...** message is displayed.



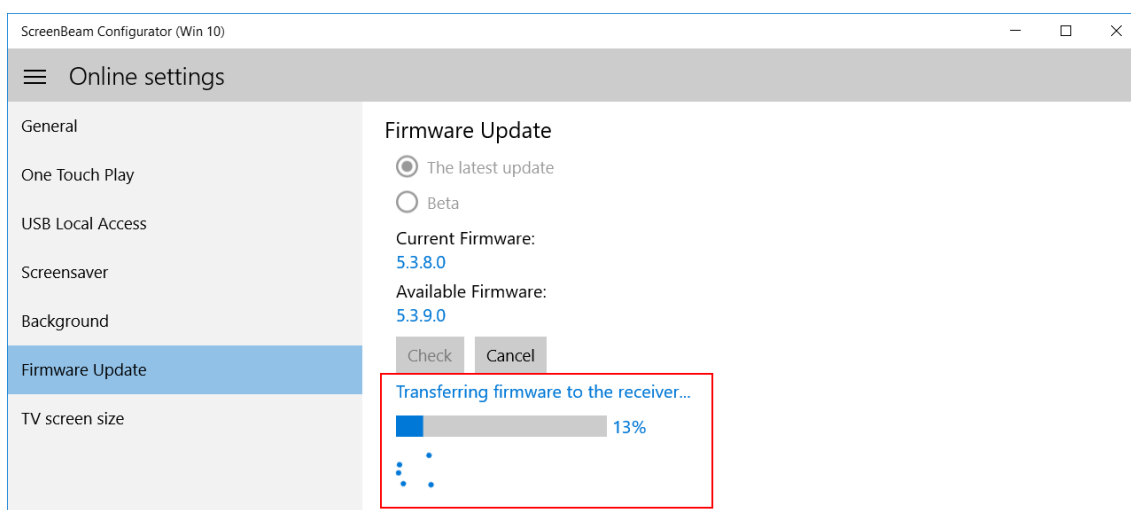
10. Tap or click **Update** to start the firmware update process. The app begins to download the new firmware.



Note: During the firmware download process, you can cancel the firmware update by clicking **Cancel**.

11. After the firmware file is downloaded successfully, the app transfers the file to the

Receiver. During this process, you can cancel the firmware update by clicking **Cancel**.



12. After the firmware is successfully uploaded to the Receiver, the Receiver will update its firmware automatically. Firmware update status is displayed on the TV screen.

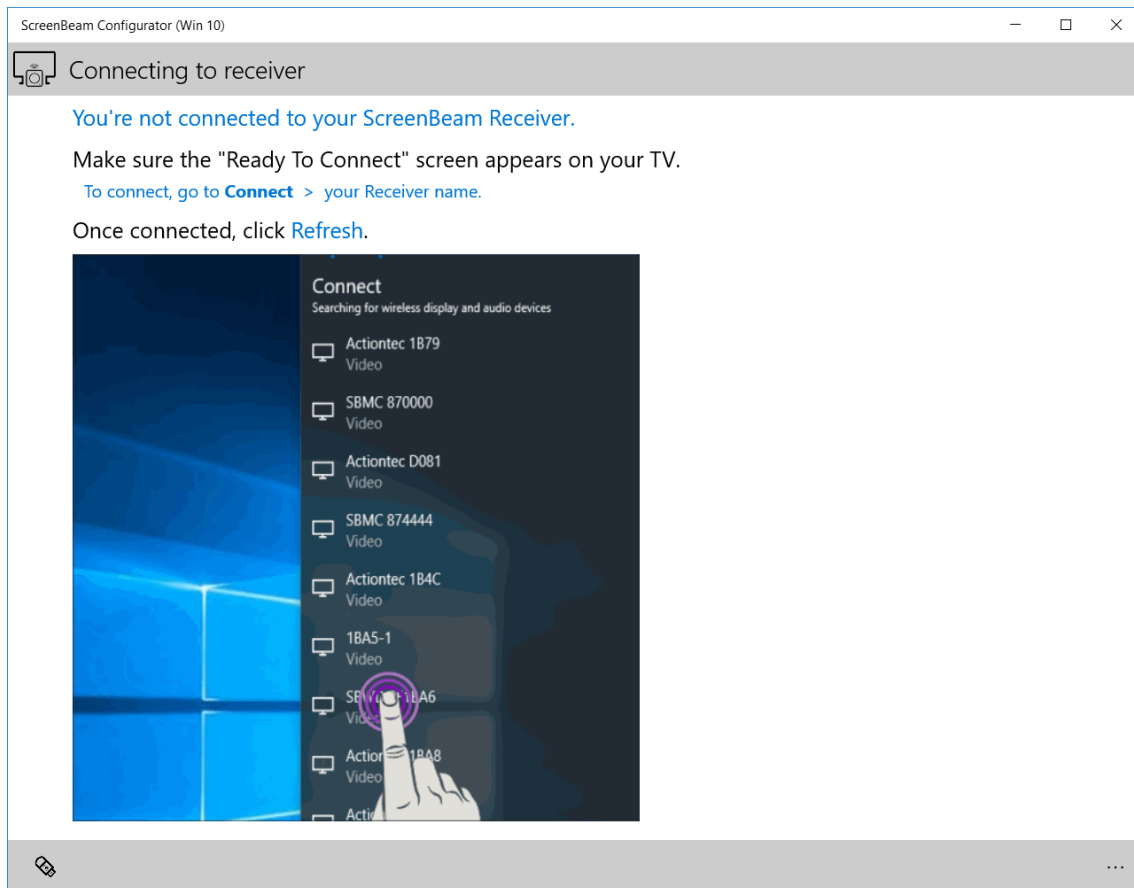
Note: Do NOT power off your Receiver during the upgrade process. Firmware updates may take several minutes.

13. Check firmware version number in the lower left corner of the TV screen after the Receiver reboots.

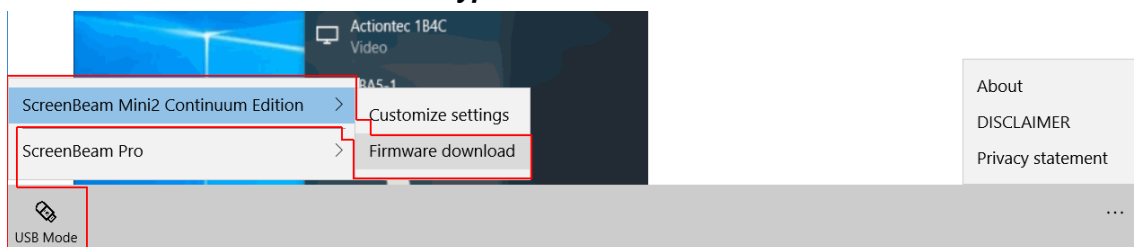
4.2. Updating Firmware by USB

To upgrade your Receiver wirelessly:

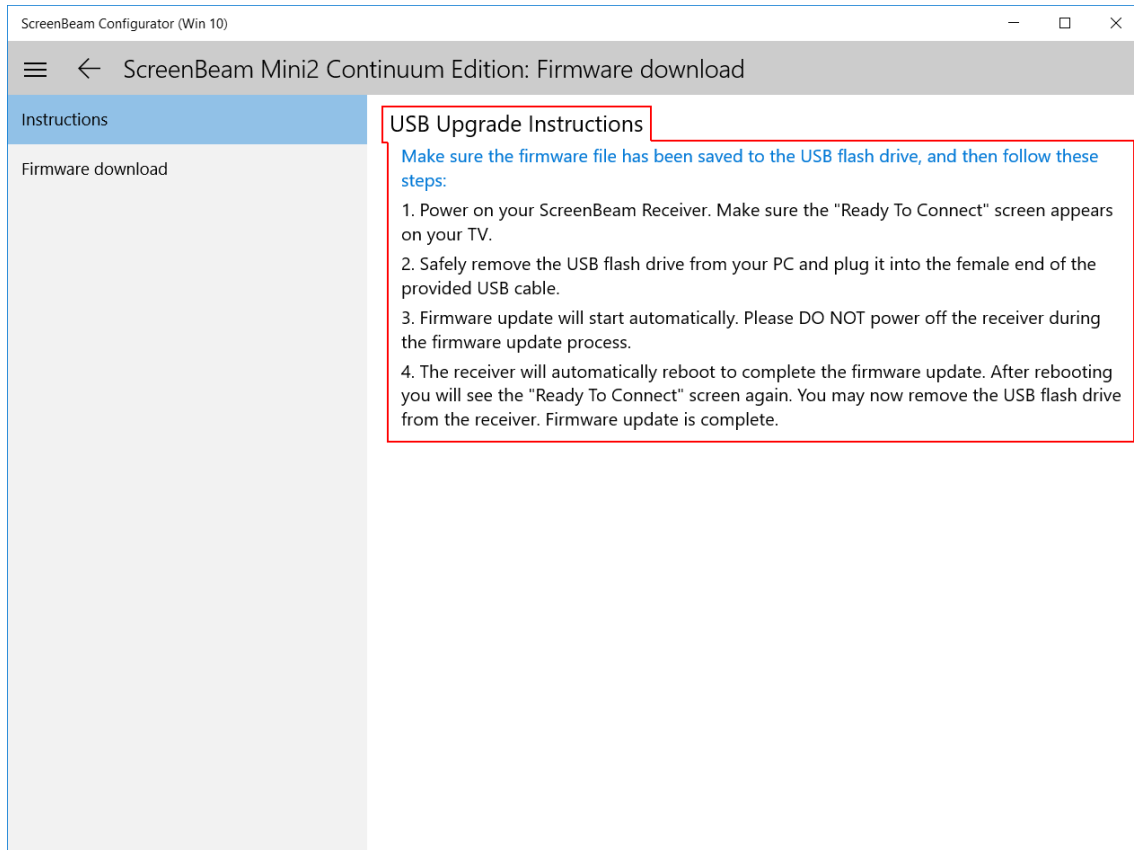
1. Make sure you have access to the Internet.
2. Prepare a FAT32 formatted USB flash drive, and plug it into your Windows 10 device.
3. Locate and launch the **ScreenBeam Configurator** app on your Windows 10 device.



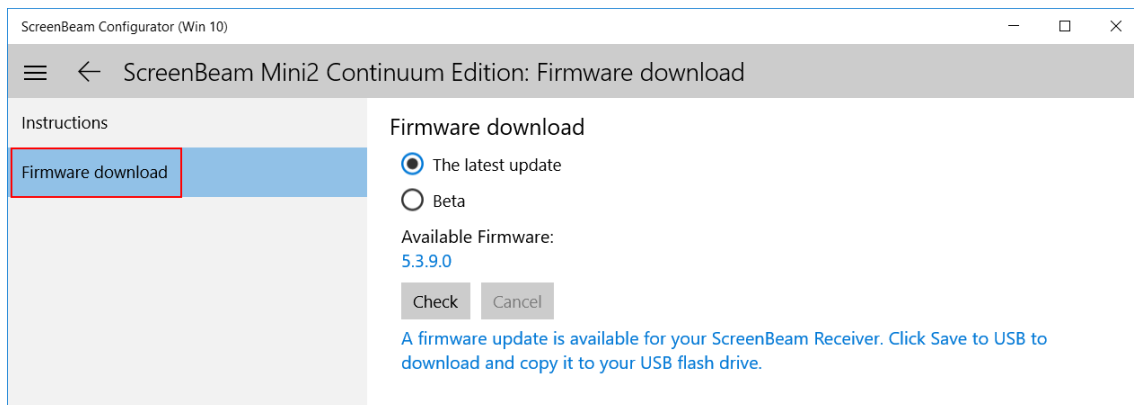
4. Select **USB Mode** -> **Receiver type** -> **Firmware download**.



5. The **Firmware download** page appears. Read the USB update instructions carefully.



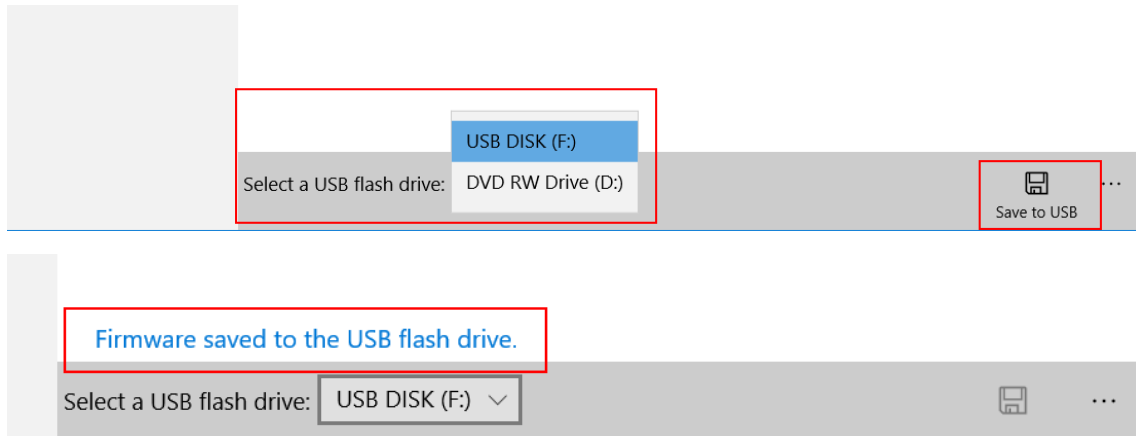
6. Select **Firmware download** to display the **Firmware download** page.



7. Select a type of firmware.

- **The latest update:** The firmware is comprehensively tested before it is released. We recommend you download this type of firmware.
- **Beta:** The firmware is for test purposes only.

8. Select your USB flash drive, and click the **Save to USB** button to download firmware to the selected USB flash drive. A message displays, indicating that your firmware is saved to the USB flash drive successfully.



9. Follow the **USB Upgrade Instructions**, as shown in step 5, to update firmware for your Receiver.

Note: DO NOT power off the Receiver or remove the USB flash drive during the firmware update process.